

# INTERPRETATION OF BOUGUER ANOMALY TO DETERMINE FAULT AND SUBSURFACE STRUCTURE AT BLAWAN-IJEN GEOTHERMAL AREA

Anjar Pranggawan Azhari<sup>1\*</sup>, Sukir Maryanto<sup>1</sup>, Arief Rachmansyah<sup>2</sup>

<sup>1</sup>*Department of Physics, Faculty of Mathematic and Science, Brawijaya University Malang  
Jl. Veteran No. 1 Malang 65144*

<sup>2</sup>*Department of Civil Engineering, Faculty of Engineering, Brawijaya University Malang  
Jl. Veteran No. 1 Malang 65144*

*Recieved: 14<sup>th</sup> August 2016; Revised: 20<sup>th</sup> September 2016; Accepted: 29<sup>th</sup> September 2016*

## ABSTRACT

Gravity survey has been acquired by Gravimeter Lacoste & Romberg G-1035 at Blawan-Ijen geothermal area. It was a focusing study from previous research. The residual Bouguer anomaly data was obtained after applying gravity data reduction, reduction to the horizontal plane, and the upward continuation. The result of Bouguer anomaly interpretation showed the occurrence of new fault and their relative movement. Blawan fault (F1), F2, F3, and F6 are the normal fault. Blawan fault is the main fault controlling hot springs at Blawan-Ijen geothermal area. F4 and F5 are the oblique fault and forming a graben at Banyupahit River. F7 is the reverse fault. Subsurface model shows that Blawan-Ijen geothermal area was dominated by the Ijen caldera-forming ignimbrite ( $\rho_1=2.670 \text{ g/cm}^3$ ), embedded shale and sand ( $\rho_2=2.644 \text{ g/cm}^3$ ) as Blawan lake sediments, magma intrusion ( $\rho_3=2.814 \text{ g/cm}^3$  &  $\rho_7=2.821 \text{ g/cm}^3$ ), andesite rock ( $\rho_4=2.448 \text{ g/cm}^3$ ) as geothermal reservoir, pyroclastic air fall deposits ( $\rho_5=2.613 \text{ g/cm}^3$ ) from Mt. Blau, and lava flow ( $\rho_6=2.890 \text{ g/cm}^3$ ).

**Keywords:** Gravity; lineament; Bouguer anomaly; new fault; Blawan; geothermal; subsurface

## Introduction

Blawan-Ijen area is located in Blawan – Ijen geothermal area, Bondowoso, East Java, Indonesia (Figure 1). It is inside Ijen Volcanic Complex (IVC) at the northern part around Kendeng caldera.<sup>1</sup> In the beginning, caldera was formed because of a volcanic quaternary process and Old Ijen eruption was followed by forming of Blawan ancient lake. Blawan ancient lake has the width of 5 kilometers. The presence of Pedatigraben became way out to outside IVC caldera for ancient lake's fluid. Now, Blawan ancient lake's trace can be found as clastic sediments in steep hills and northern part of caldera. Some sediment eroded by river streamline because of a geological fault.<sup>2</sup>

The topography of inside caldera IVC is dominated by volcanic cones. One of volcanic cones is Mt. Blau<sup>3</sup> which include on

this study area. In addition, Mt. Ringgih is another volcanic cone existing alongside east rim of Ijen Volcanic Complex (IVC).

Blawan-Ijen area includes in young Ijen formation.<sup>4</sup> Based on geological map (Figure 2), study area is dominated by clastic sediments of Blawan ancient lake, pyroclastic air fall deposits of IVC, lava flow, and lahar deposits of Blawan – Kalisengon.<sup>5</sup>

The early study predicted that Blawan-Ijen area was the potential area of new geothermal prospect in Java.<sup>6,7</sup> Type of Blawan-Ijen geothermal area is the hydrothermal system. The existence of its system is characterized by 21 hot springs. The hot springs have the maximum temperature at 50°C. Most of the hot springs spread to the north and following the fault to northeast direction.<sup>8</sup>

Corresponding author:

\*E-Mail: pranggawan.juventini@gmail.com

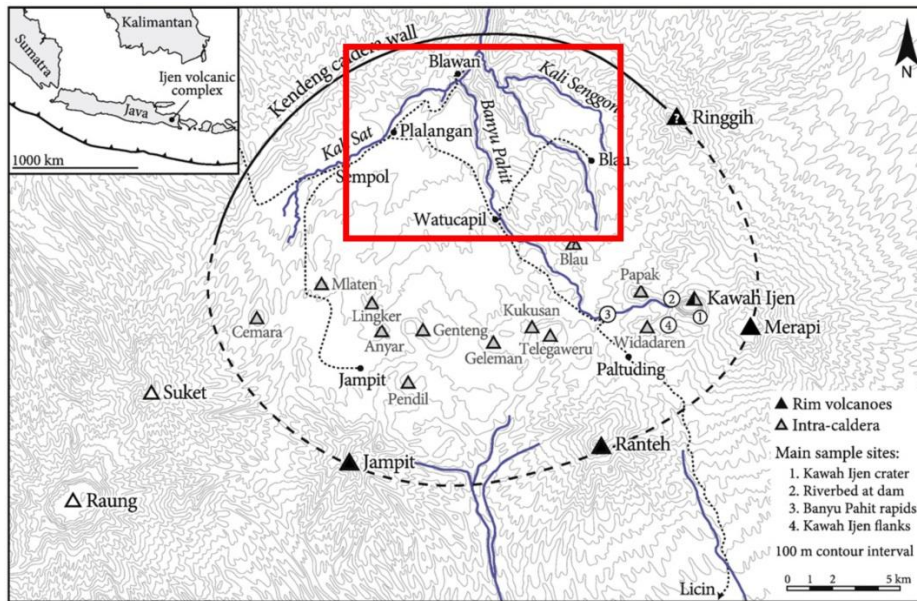
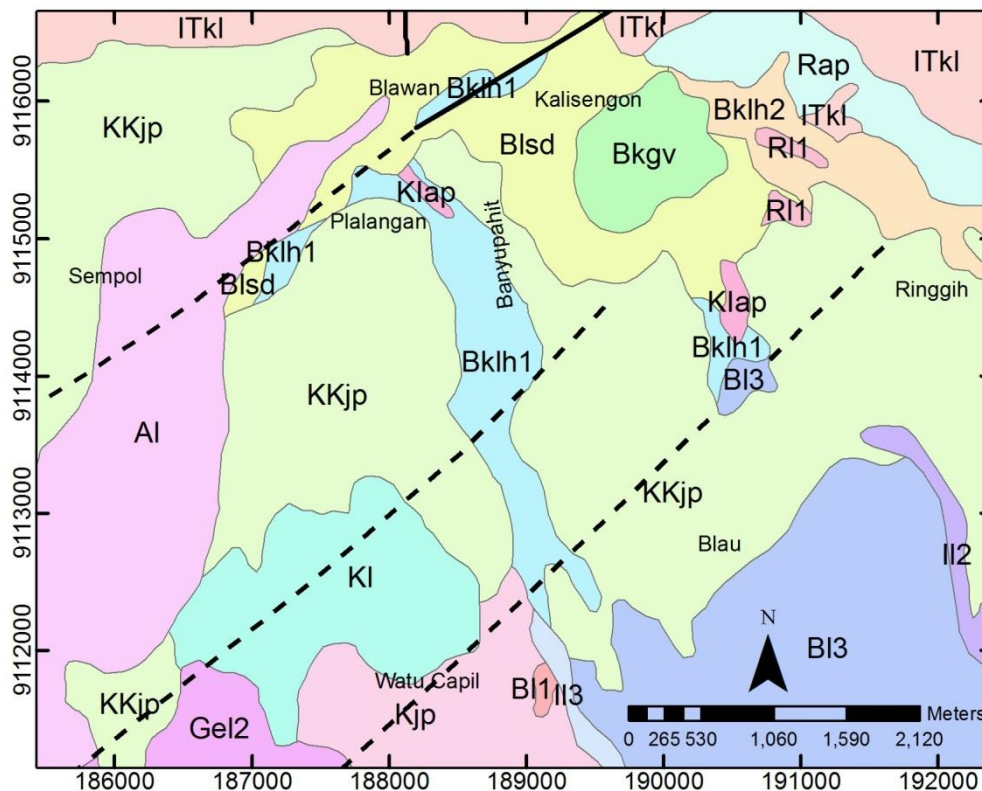


Figure 1. Blawan-Ijen study area (inside red box)<sup>1</sup>



**Legend**

- Al, Mt. Anyar lava flow
  - Bkgv, Blawan Kalisengon debris avalanche deposits
  - Bklh1, Blawan Kalisengon 1 lahar deposits
  - Bklh2, Blawan Kalisengon 2 lahar deposits
  - Bl1, Mt. Blau 1 lava flow
  - Bl3, Mt. Blau 3 lava flow
  - Blsd, Blawan lake sediments
  - Gel1, Mt. Genteng 1 lava flow
  - Gel2, Mt. Genteng 2 lava flow
  - ITkl, The old Ijen pre-caldera composit cone
  - Il2, Ijen crater 2 lava flow
  - Il3, Ijen crater 3 lava flow
  - Klap, The Ijen caldera forming ignimbrite
  - KKjp, The Ijen caldera complex airfall deposits
  - Kjp, Mt. Kukusan air fall deposits
  - Kl, Mt. Kukusan lava flow
  - Rap, Mt. Ringgih pyroclastic flow deposits
  - RI1, Mt. Ringgih 1 lava flow
- uncertain fault    — fault

Figure 2. Geological map on study area (modification from Sujanto)<sup>5</sup>

Identification of subsurface structure on promising areas is important to understand the system. Gravity survey is one of all geophysics methods which are appropriate to explore subsurface structure. It is a non-destructive method. The difference in mass density is the basic principle of this survey. Gravity method is a strong method to map the subsurface fault due to its sensitivity of vertical change.

Based on the previous study, gravity surveying on IVC has been done by Raehanayati.<sup>7</sup> Space between stations from the last study was 0.25 – 1.00 km. The stations were only formed a straight line from Bondowoso to Blawan and Ijen crater. The previous study focused on identification of geothermal reservoirs extensively. It did not determine faults which were shown in geological maps too.<sup>5</sup> Further study, it is needed to determine faults at the geothermal area. The spacing between stations was made by the grid and denser on low Bouguer anomaly of the previous study. This was done for the purpose of resolving the lack of the previous study by showing any fault or new fault position and making the edge of the reservoir clearer.

**Methods**

The instrument for this study is Gravimeter

Lacoste-Romberg G-1053. The physical quantity which is measured by gravimeter is earth's gravitational acceleration.<sup>9</sup> Gravity data was acquired on the focused area. Total of the stations is 288 points with 150-250 meters spacing (Figure 3). Data was acquired and processed from February to October 2015.

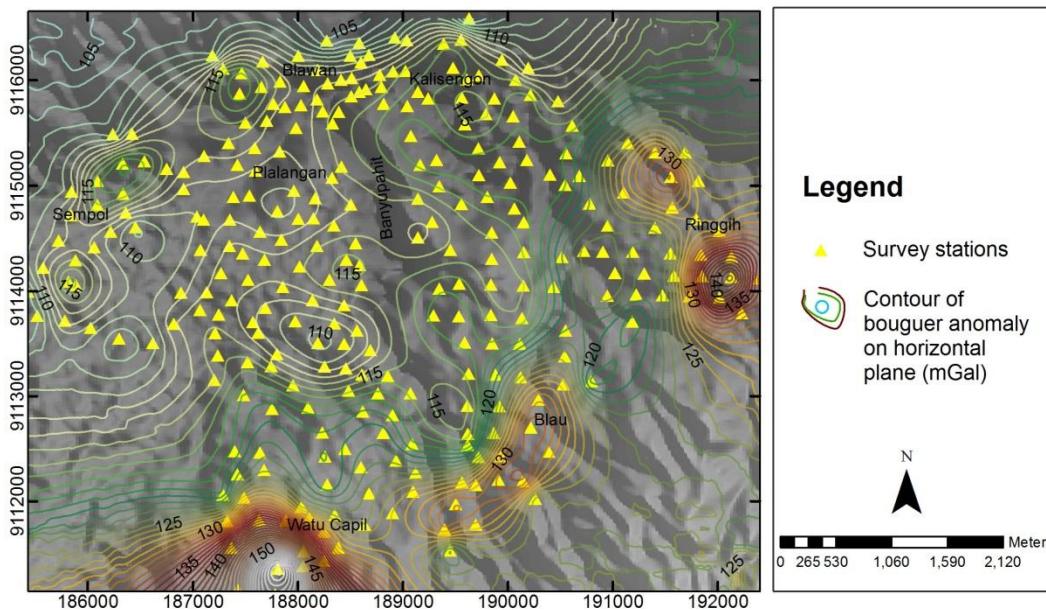
Measured data was processed to obtain Bouguer anomaly maps and subsurface model by the following steps:

- a. gravity data reduction (tidal correction, drift correction, latitude correction, free air correction, terrain correction, and Bouguer correction) until get Bouguer anomaly on topography by equation.<sup>10</sup>

$$\Delta g_{BA} = g_{obs} - g_{\phi} + fac + bc + tc$$

where  $\Delta g_{BA}$  is Bouguer anomaly on topography (mGal),  $g_{obs}$  is the measured gravitational acceleration which is corrected by tidal and drifts (mGal),  $g_{\phi}$  is normal gravitational acceleration at station (mGal),  $fac$  is free air correction (mGal),  $bc$  is Bouguer correction (mGal), and  $tc$  is terrain correction (mGal)

- b. reduction of Bouguer anomaly on topography to the horizontal plane by Dampney's equivalent source method.<sup>11</sup>
- c. separation of Bouguer anomaly on the



**Figure 3.** Measured stations in Bouguer anomaly on horizontal plane map

horizontal plane to Bouguer anomaly regional and Bouguer anomaly residual by upward continuation

- d. qualitative interpretation by describing the meaning all Bouguer anomaly map and quantitative interpretation by making model based on the geological map and four cross sections on Bouguer anomaly residual map in Grav2dc software.

### Result and Discussion

The result of processing data is Bouguer anomaly maps (on the horizontal plane, regional, and residual) and subsurface model in the study area. The subsurface models have fitting error under 10%.

Based on Bouguer anomaly in Figure 3, Bouguer anomalies on the horizontal plane are shown by colored contours. Low Bouguer anomalies (104 – 106 mGal) are pointed out by blue and light yellow contour. Blawan, Plalangan, and the northern part of IVC are covered by low Bouguer anomaly with closure at Plalangan and Blawan. Medium Bouguer anomalies (116 – 133 mGal) are shown by green contours. Sempol and the northern part of Blau are covered by its

closures. High Bouguer anomalies (133 – 160 mGal) encompass Watu Capil, the southern part of Blau, and around Mt. Ringgih. High Bouguer anomalies are shown by maroon, grey, and white contours.

Regional Bouguer anomaly (Figure 4) is the result of upward continuation on Bouguer anomalies over the horizontal plane. The level of upward continuation is 900 meters. Low – high (112 – 130 mGal) trend of anomaly spreads from northwest to the southwest from the study area. It indicates that basement rocks turn to be shallower adjusting the trend.

Residual Bouguer anomaly (Figure 5) describes subsurface structure and faults qualitatively. Positive anomaly is coloured by green, orange, maroon, grey, and white contours. Whereas negative anomaly is illustrated by light yellow and light blue. Positive and negative anomalies formed lineament patterns with denser contours. In this sense, it can be interpreted as faults. The negative closures indicate low mass density beneath the surface. On the other side, the positive closures indicate high mass density beneath the surface.

In Figure 5, it is found seven faults in the

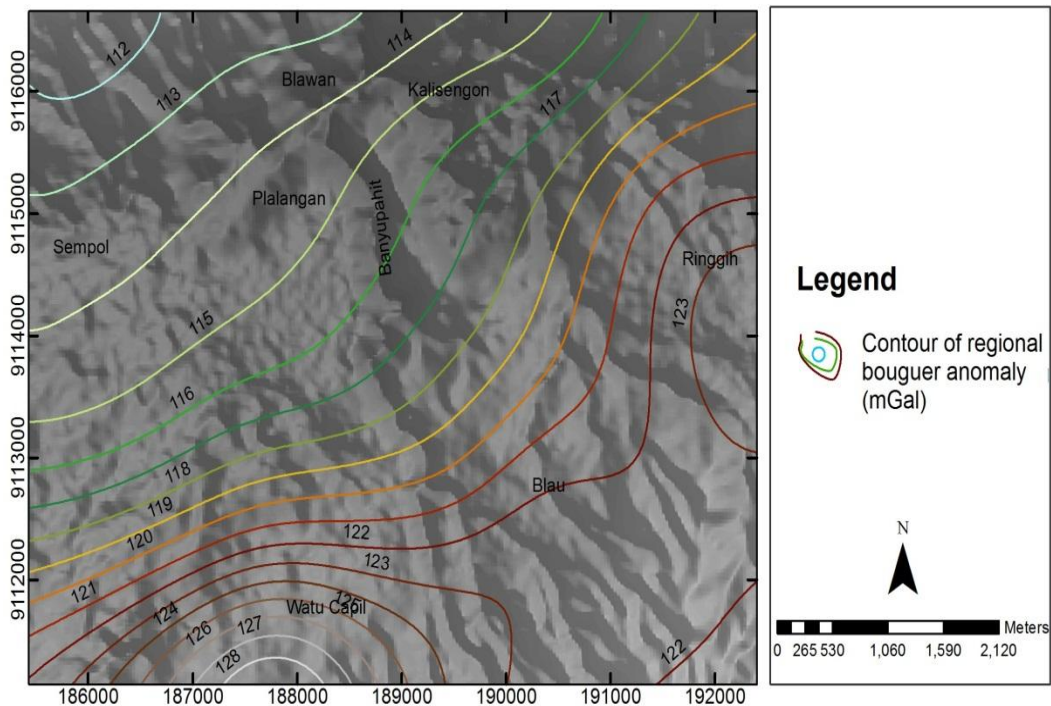
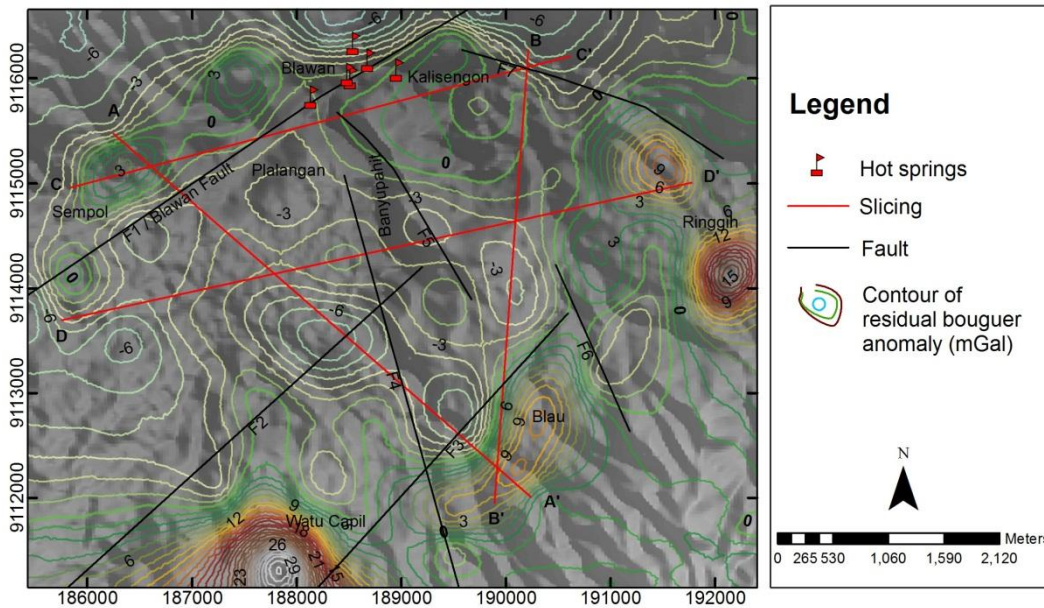


Figure 4. Regional Bouguer anomaly map on Blawan-Ijen study area



**Figure 5.**Prospecting new faults based on residual Bouguer anomaly pattern in Blawan-Ijen area with four cross sections

study area. Three faults spread over northeast–southwest direction which is shown on geological map<sup>5</sup> and the four prospecting faults spread over north-south direction. Blawan fault (F1) is located to northeast – southwest direction having positive – negative lineament of dense contour on the northern part of the study area. In addition, at the northern part lineament of Blawan fault, it is found positive Bouguer anomaly and higher topography at the opposite side. On the contrary, at the southern part, it is found negative Bouguer anomaly and lower topography.

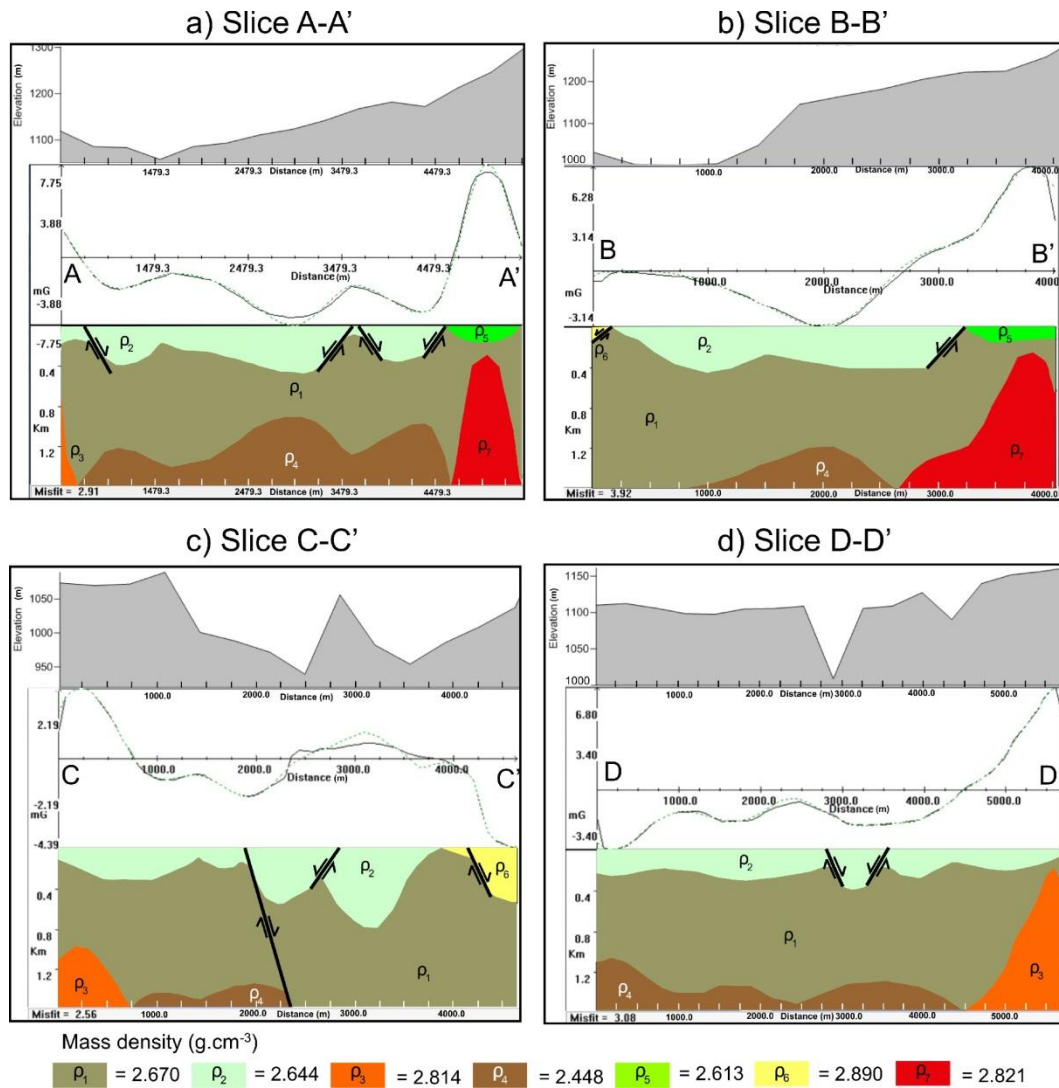
According to contour patterns of residual Bouguer anomalies, topography, and subsurface models (Figure 6), the relative movement of the faults can be estimated. Blawan fault, with F1 label, is a normal fault. The Blawan fault occurs from surface to predicted reservoir at 1400 meters beneath the surface (Figure 6.a). We assume Blawan fault reaches reservoir because it is the main fault which controls geothermal manifestation moving from reservoir to surface.

The relative movement of F2, F3, and F6 are same as Blawan fault’s relative

movement. Another case, F7’s relative movement is reversed. The Fault F7 is followed by the positive Bouguer anomaly associated with lower topography and the negative Bouguer anomaly associated with higher topography (Figure 6).

The direction of F4 and F5 movement is the oblique fault, the combination of normal fault, and strike-slip fault. It is characterized by some closures of residual Bouguer anomaly adjacent to same value move away. This closures look separated each other as shown in Figure 5. In addition, F4 and F5 have a possibility to form a graben. Next, this possibility needs to be explored further using GPS geodetic to obtain its proof.

Moreover, the positive residual Bouguer anomaly (Figure 5) is very dense at Watu Capil area (30 mGal). This closure is arisen due to the higher mass density along the vertical size compared to surrounding mass. The shape of the closure still exists in regional Bouguer anomaly map (Figure 4). It indicates mass density forming closure derived from bedrock to near surface. Based on models in Figure 6, the east and southeast area are dominated by intrusions of basaltic magma activity which are coloured by orange and maroon color. Mass density of



**Figure 6.** Four subsurface models in Blawan-Ijen study area and the elevation at a) A-A' cross section, b) B-B' cross section, c) C-C' cross section, d) D-D' cross section

orange color,  $\rho_3$ , is  $2.814 \text{ g/cm}^3$ . These intrusions break through bedrock to 1050 meters deep beneath surface. It is located near northern part of Kendeng caldera which is the weak zone to the north (Figure 6a and Figure 6c), and near the eastern part of Mt. Ringgih (Figure 6d). While the mass density of  $\rho_7$  (Figure 6a and Figure 6b), intrusions showed by maroon color, is  $2.821 \text{ g/cm}^3$ . It is located under Watu Capil area and has great possibility come from widen out of basaltic magma inside Mt. Blau.

The lowest of negative Bouguer anomaly is located beneath Plalangan. It reaches  $-8 \text{ mGal}$  and associated with the geothermal

reservoir. Geothermal reservoir usually was characterized by closure of lowest residual anomaly and low mass density.<sup>7,12</sup> Based on Figure 6, lowest mass density is shown by brown color ( $\rho_4$ ) which has  $2.448 \text{ g/cm}^3$ . It is andesite rock. This andesite exists 900 meters until 1500 meters beneath Plalangan, Kalisengon, and Banyupahit River. This rock has a main role as a reservoir at the study area. We estimate that volume of reservoir reaches  $6,526 \times 10^9 \text{ m}^3$ . Getting to the northeast outside of Blawan and Kalisengon, reservoir becomes thinner and vanished. In contrast to it, the Ijen caldera-forming ignimbrite becomes thicker. This ignimbrite,

dominated by andesite and basalt fragments, came from air fall pyroclastic deposits of IVC. It covered most of the northern side of IVC. Its mass density is  $2.670 \text{ g/cm}^3$  and shown by  $\rho_1$  with khaki color (Figure 6).

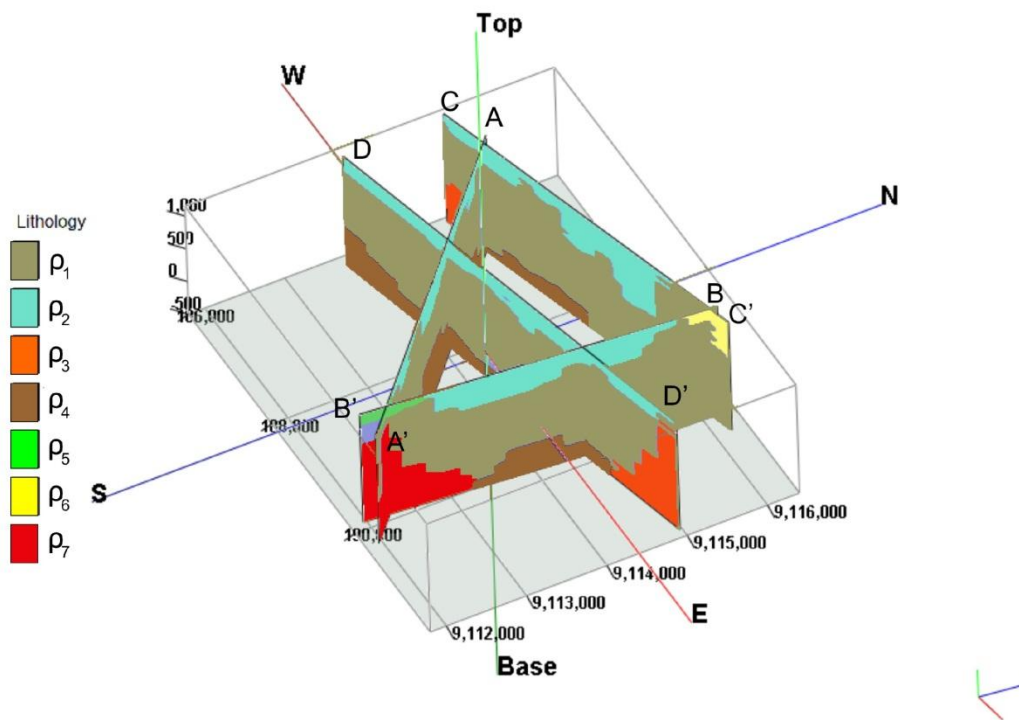
Models in Figure 6 show that the surface of the study area are covered by Blawan lake sediments (light green color), Mt. Blau's pyroclastic air fall deposits (green color), and lava from Mt. Ringgih (yellow color). Blawan lake sediments were formed from embedded shale and sand which has mass density  $\rho_2=2.644 \text{ g/cm}^3$ . Its thickness is around 200 meters to 750 meters from surface. It gets thicker until 400 meters at Banyupahit River (Figure 6c) but the thickest part is exactly in debris flow area at Kalisengon. In common, the Blawan lake sediments get thicker from all side to north side at Blawan and Kalisengon (Figure 7).

Pyroclastic air fall deposit from Mt. Blau,  $\rho_5$ , is  $2.613 \text{ g/cm}^3$ . Its thickness is not more 200 meters. Lava flow from Mt. Ringgih on the surface is shown by yellow color and  $\rho_6$  (Figure 6 and Figure 7). Its mass density is  $2.890 \text{ g/cm}^3$ . This lava flow got thicker to the

east.

Magma activity, causing intrusions, from Mt. Blau, Mt. Ringgih, and around Blawan fault became heat source of the geothermal system. These intrusions can be primary or secondary heat source. The intrusion around Mt. Blau is older than intrusion from Mt. Ringgih. As we know that Mt. Blau is the oldest vent inside IVC which occurs 50,000 years ago<sup>3</sup> and cooling down so it has higher mass density than the other intrusions.

Outflow zone on Blawan geothermal system is located on Blawan villages. The manifestation of outflow fluid is Blawan hot springs. It moves through Blawan fault and rises on the surface at Blawan village. Subsurface structures which contain hot spring, detected by resistivity and Ground Penetrating Radar surveys, spread to northeast following Blawan fault and drainage pattern at the north inside IVC.<sup>8</sup> It is a permeable layer with low resistivity and exists 20 meters to 30 meters depth. All finding affirm that Blawan fault is primary structure controlling geothermal manifestation at the north IVC.



**Figure 7.** Fence of subsurface models in Blawan-Ijen study area viewed from top-east

Meanwhile, the recharge zone is located on around Mt. Blau and Banyupahit River. Its trait is shown by some lineaments of structure which become strip for meteoric water. Meteoric water such as raindrop moves from the higher elevation at south to lower elevation at the north by gravitational force through the cracks. The cracks or faults at recharge zone possibly are Banyu pahit graben (F4 & F5), F2, F3, F6, and F7. No one of them is associated with hot springs. It indicates they do not control geothermal manifestation at the study area.

The fluid from recharge zone enters reservoir beneath Plalangan. If we see negative closures around Plalangan (Figure 5) and subsurface models (Figure 6 and Figure 7) further, the reservoir is believed continue to Wurung crater at southwest from Plalangan but Utama said that geothermal prospect in IVC splits up into two systems.<sup>13</sup> The systems are Blawan geothermal system, and system covering Wurung crater and Mt. Djampit at southwest outside study area. For further research, on predicted continuing area need to investigate to locate the border of the reservoir or between two reservoirs. It can get us better understanding about whole geothermal system inside IVC.

## Conclusion

Gravity survey with denser and gridding stations is well to locate any fault at Blawan-Ijen geothermal area. Most of the faults are north – south direction and main fault controlling hot springs is Blawan fault which characterized by dense lineament of positive – negative Bouguer anomalies and hot springs line. This fault became a way out for hot springs at Blawan. Moreover, subsurface models show predicted geothermal reservoir with lowest mass density ( $2.448 \text{ g/cm}^3$ ) beneath Plalangan, Blawan, and Banyupahit River.

For next study, we suggest assure the relative movement of all new faults or predicted graben and investigate border of reservoir at southwest area of IVC.

## Acknowledgment

We thank to gravity survey team, all members of BRAVOENERGEOBHAS UB research group, Hibah Penelitian Unggulan Perguruan Tinggi 2015, and NSF – USAID 2015 PGA 2000005053.

## References

1. Hinsberg V, Berlo K, Bergen M, Jones AW. Extreme Alteration by Hyperacidic Brines at Kawah Ijen Volcano, East Java, Indonesia: Textural and Mineralogical Imprint. *Journal of Volcanology and Geothermal Research* [Internet]. 2010 Dec [cited 2014 Dec 12];198(1-2):253-265. Available from: <http://www.sciencedirect.com/science/article/pii/S037702731000288X> doi:10.1016/j.jvolgeores.2010.09.002
2. Zaenuddin A, Wahyudin D, Surmayadi M, Kusdinar E. Prakiraan Bahaya Letusan Gunung Api Ijen Jawa Timur. *Jurnal Lingkungan dan Bencana Geologi* [Internet]. 2012 Aug [cited 2014 Dec 19];3(2):109-132. Available from: <http://www.bgl.esdm.go.id/publication/kcfinder/files/article/JLBG%2020120204.pdf>.
3. Bergen MJ, Bernard A, Sumarti S, Sriwana T, Sitorus K. Crater Lakes of Java: Dieng, Kelud and Ijen. Bali: Excursion Guidebook IAVCEI General Assembly, 2000.
4. Sidarto, Suwarti T, Sudana D. Peta Geologi Lembar Banyuwangi, Jawa, Scale 1:100.000. Bandung: Pusat Penelitian dan Pengembangan Geologi; 1993.
5. Sujanto, SyarifuddinMZ, Sitorus K. Geological Map of The Ijen Caldera Complex, East Java. Scale 1:50.000. Bandung: Direktorat Vulkanologi Indonesia; 1988.
6. Afandi A, Maryanto S, Rachmansyah A. Identifikasi Reservoir Panasbumi Dengan Metode Geomagnetik Daerah Blawan Kecamatan Sempol Kabupaten Bondowoso. *Journal Neutrino* [Internet]. 2013 Oct [cited 2014 Dec 12];6(1):1-



10. Available from: <http://ejournal.uin-malang.ac.id/index.php/NEUTRINO/article/viewFile/2441/4429> doi:10.18860/neu.v0i0.2441.
7. Raehanayati, Maryanto S, Rachmansyah A. Studi Potensi Geotermal Blawan-Ijen, Jawa Timur Berdasarkan Metode Gravity. *Journal Neutrino* [Internet]. 2013 Oct [cited 2014 Dec 12];6(1):31-39. Available from: <http://ejournal.uin-malang.ac.id/index.php/NEUTRINO/article/viewFile/2444/4434> doi:10.18860/neu.v0i0.2444.
8. Suciningtyas IK, Maryanto S, Rachmansyah A. Sebaran Mata Air Panas Blawan-Ijen Berdasarkan Data Geolistrik Resistivitas. *Natural B*. 2013 Oct;2(2):164-171.
9. Telford WM, Geldart LP, Sheriff RE. *Applied Geophysics Second Edition*. Cambridge: Cambridge University Press;1990.
10. Arafin S. Relative Bouguer Anomaly. *The Leading Edge*. 2004 Sep;23(9):850-851.
11. Setyawan A. Kajian Metode Sumber Ekuivalen Titik Massa Pada Proses Pengangkatan Data Gravitasi Ke Bidang Datar. *Berkala Fisika* [Internet]. 2005 Jan [cited 2014 Dec 25];8(1):7-10. Available from: [http://eprints.undip.ac.id/1654/1/Kajian\\_Metode\\_Sumber\\_Ekuivalen\\_Titik\\_Massa\\_pada\\_Proses\\_Pengangkatan\\_Data\\_Gravitasi\\_ke\\_Bidang\\_Datar.pdf](http://eprints.undip.ac.id/1654/1/Kajian_Metode_Sumber_Ekuivalen_Titik_Massa_pada_Proses_Pengangkatan_Data_Gravitasi_ke_Bidang_Datar.pdf).
12. Riani E, Maryanto S, Rachmansyah A. Subsurface Geological Survey Based on Gravity Method in Ijen Volcano, East Java. *Physics Student Journal UB* [Internet]. 2013 [cited 2014 Dec 12];1(1):64-66. Available from: <http://physics.studentjournal.ub.ac.id/index.php/psj/article/viewFile/16/19>.
13. Utama AP, Dwinanto A, Situmorang J, Hikmi M, Irshamukhti. Green Field Geothermal System in Java, Indonesia. In: Suryantini. *1st ITB Geothermal Workshop 2012*; 2012 Mar 6-8; Bandung. Bandung: ITB Publisher; 2012.