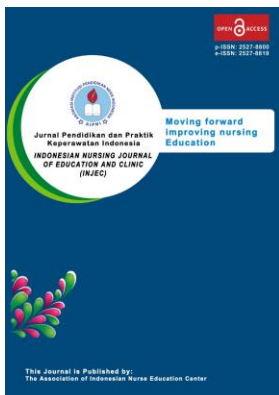


Guideline for Author: **INDONESIAN NURSING JOURNAL OF EDUCATION AND CLINIC (INJEC)**

DESCRIPTION



Indonesian Nursing Journal of Education and Clinic (INJEC) is the official peer-reviewed research journal of the Association of Indonesian Nurses Education Center (AINEC). This journal aims to promote advancement in nursing and healthcare through the dissemination of the latest research findings. INJEC covers a wide range of nursing topics such as nursing education, clinical practice, advanced nursing issue and policy related to the nursing profession. This journal publishes two issues per year in June and December. INJEC intended readership includes a nurse educator, researcher, manager, and nurse practitioner at all levels. Indonesian Nursing Journal of Education and Clinic (INJEC) has been obtained (p-ISSN: [2527-8800](#); e-ISSN: [2527-8819](#)). The Indonesian Nursing Journal of Education and Clinic began to switch to the online journal system starting in 2016.

FOCUS AND SCOPE

This journal aims to promote advancement in nursing and healthcare through the dissemination of the latest research findings. As peer-reviewed and open-access journal, INJEC provides a platform for the publication of scientific research in all areas of nursing such as:

- Fundamental of Nursing
- Management in Nursing
- Medical-surgical nursing
- Critical care Nursing
- Community Health Nursing
- Mental Health Nursing
- Geriatric Nursing
- Family Nursing
- Maternity Nursing
- Women's health
- Pediatric Nursing
- Education in Nursing

SECTION POLICIES

ARTICLES

- Open Submissions
- Indexed
- Peer Reviewed

REVIEW

- Open Submissions
- Indexed
- Peer Reviewed

PEER REVIEW PROCESS

In the reviewing process, there are at least two reviewers for each manuscript for the related topic. Judgement from both reviewers will be the main priority on which the editor will make their decision if there are only two reviewers. Three weeks will be needed for the reviewer to complete one round of the reviewing process.

Generally, the candidate of the reviewers will be chosen based on their reputation in the international publication number and the study quality. For the next step, the editor sends an invitation letter to each candidate of the reviewer. After the candidate of the reviewer has been informed of their availability for the reviewing process, the editor can create an account for each reviewer and then send the manuscript by OJS.

All of the reviewing processes is done by way of a double-blind review and is managed by the editor in OJS.

PUBLICATION FREQUENCY

The INJEC publishes between 12 and 15 research and reviews articles twice a year in June and December

OPEN ACCESS POLICY

This Journal provides immediate open access to its content on the principle that making research freely available to the public to supports a greater global exchange of knowledge.

This journal (p-ISSN:[2527-8800](#); e-ISSN:[2527-8819](#)) is licensed under a [Creative Commons Attribution 4.0 International License](#).

ARCHIVING

This journal utilizes the LOCKSS system to create a distributed archiving system among participating libraries and permits those libraries to create permanent archives of the journal for purposes of preservation and restoration.

AUTHOR FEES

There is no additional cost for both the article submission charge and the article processing charge. All manuscript published in this journal are free.

PLAGIARISM CHECKING POLICY

All articles will be checked with similarity screening tools using Turnitin (<https://www.turnitin.com/>).

ONLINE SUBMISSIONS

Already have a Username/Password for INDONESIA NURSING JOURNAL OF EDUCATION AND CLINIC (INJEC)?

[GO TO LOGIN](#)

Need a Username/Password?

[GO TO REGISTRATION](#)

Registration and login are required to submit items online and to check the status of current submissions.

AUTHOR GUIDELINES

We now differentiate between the requirements for new and revised submissions. You may choose to submit your manuscript as a single Word file to be used in the refereeing process. Only when your paper is at the revision stage, will you be requested to put your paper into a 'correct format' for acceptance and provide the items required for the publication of your article.

Selection of papers for publication is based on their scientific excellence, distinctive contribution to knowledge (including methodological development) and their importance to contemporary nursing, midwifery or related professions. Submission to this journal proceeds fully online, and you will be guided stepwise through the creation and uploading of your files.

The manuscript should be written in Ms. Word format. Figure, illustration, and picture are included in manuscript file. Submit manuscript directly to <https://injec.ainpi-ainec.org/index.php/INJEC>. INJEC will automatically reject any manuscript submitted via email or hardcopy.

The Editorial Board determines feasible manuscript after obtaining recommendations from peer reviewers. Manuscript revision is author responsibility, and manuscripts that are not feasible will be returned to the author.

TYPES OF MANUSCRIPT

Original Articles

Original Articles should report on original clinical studies or research not previously published or being considered for publication elsewhere. The text should not exceed 7000 words, including a list of authors and their affiliations, corresponding author, acknowledgements and figure legends, with an abstract of a maximum of 250 words, a list of a minimum of 25 references primarily from international journals indexed by Scopus or Web of Science, and a maximum 5 figures/tables (see below for more details on the layout).

Systematic Reviews

Systematic Reviews are exhaustive, critical assessments of evidence from different data sources in relation to a given subject in the area of nursing. A systematic search of the relevant data sources should be carried out and the items collected should be carefully evaluated for inclusion based on a priori defined inclusion/exclusion criteria. A description and an analytical graphic representation of the process should be provided. The specific features of the participants' or patients' populations of the studies included in the review should be described as well as the measures of exposure and the outcome with the indication towards the corresponding data sources. A structured abstract is required (the same as for short reviews). The text must not exceed 7,000 words including the acknowledgments, with no more than four tables and/or figures and a minimum of 40 references.

Meta-analyses

Meta-analyses should follow the same guidelines for systematic reviews. They are expected to provide exhaustive information and statistical assessment of the pooled estimates of predefined outcomes, study heterogeneity and quality, possible publication bias, meta-regression, and subgroup analyses when and where appropriate. Depending on the type of study, the authors are invited to submit PRISMA flow diagrams or MOOSE checklists. Both systematic reviews and meta-analyses will be dealt with as original articles are, as far as the editorial process is concerned.

TITLE AND AUTHORSHIP

The title should describe the summary of the research (concise, informative, no abbreviations, and a maximum of 12 words).

The authorship of articles should be limited to those who have contributed sufficiently to take on a level of public responsibility for the content. Provided should be full names of authors (without academic title); author's affiliation [name(s) of department(s) and institution(s)]; the corresponding author's name, mailing address, telephone, and fax numbers, and e-mail address. The corresponding author is the person responsible for any correspondence during the publication process and post-publication.

ABSTRACT

Abstracts should be less than 250 words, and should not include references or abbreviations. They should be concise and accurate, highlighting the main points and importance of the article. In general, they should also include the following:

1. **Introduction:** One or two sentences on the background and purpose of the study.
2. **Method:** Describe the research design, settings (please do not mention the actual location, but use geographic type or number if necessary); Participants (details of how the study population was selected, inclusion and exclusion criteria, numbers entering and leaving the study, and any relevant clinical and demographic characteristics).
3. **Results:** Report the main outcome(s)/findings including (where relevant) levels of statistical significance and confidence intervals.
4. **Conclusions:** Should relate to the study aims and hypotheses.
5. **Keyword:** Provide between three and five keywords in alphabetical order, which accurately identify the paper's subject, purpose, method, and focus.

TEXT

The text should be structured as follows: introduction, methods, results, discussion, and conclusion. Footnotes are not advisable; their contents should be incorporated into the text. Use only standard abbreviations; the use of non-standard abbreviations can be confusing to readers. Avoid abbreviations in the title of the manuscript. The spelt-out abbreviation followed by the abbreviation in parenthesis should be used on the first mention unless the abbreviation is a standard unit of measurement. If a sentence begins with a number, it should be spelt out.

ACKNOWLEDGMENT (OPTIONAL).

Acknowledgments should be limited to the appropriate professionals who contributed to the paper, including technical help and financial or material support, as well as any general support by a department chairperson.

TABLES AND FIGURES

Tables should be numbered in Arabic numerals; and any captions should be brief, clearly indicating the purpose or content of each table. If your manuscript includes more than five tables in total, or for very large tables, these can be submitted as Supplementary Data and will be included in the online version of your article.

REPORTING GUIDELINE

The reporting guidelines endorsed by the journal are listed below:

- Observational cohort, case control, and cross sectional studies - STROBE - Strengthening the Reporting of Observational Studies in Epidemiology, <http://www.equator-network.org/reporting-guidelines/strobe/>
- Qualitative studies - COREQ - Consolidated criteria for reporting qualitative research, <http://www.equator-network.org/reporting-guidelines/coreq>
- Quasi-experimental/non-randomised evaluations - TREND - Transparent Reporting of Evaluations with Non-randomized Designs, <http://www.cdc.gov/trendstatement/>
- Randomized (and quasi-randomised) controlled trial - CONSORT - Consolidated Standards of Reporting Trials, <http://www.equator-network.org/reporting-guidelines/consort/>
- Study of Diagnostic Accuracy/assessment scale - STARD - Standards for the Reporting of Diagnostic Accuracy Studies, <http://www.equator-network.org/reporting-guidelines/stard/>
- Systematic Review of Controlled Trials - PRISMA - Preferred Reporting Items for Systematic Reviews and Meta-Analyses, <http://www.equator-network.org/reporting-guidelines/prisma/>
- Systematic Review of Observational Studies - MOOSE - Meta-analysis of Observational Studies in Epidemiology, <http://www.ncbi.nlm.nih.gov/pubmed/10789670>

SUBMISSION PREPARATION CHECKLIST

As part of the submission process, authors are required to check off their submission's compliance with all of the following items, and submissions may be returned to authors that do not adhere to these guidelines.

1. The submission has not been previously published, nor is it before another journal for consideration (or an explanation has been provided in Comments to the Editor).
2. The submission file is in OpenOffice, Microsoft Word, RTF, or WordPerfect document file format.
3. Where available, URLs for the references have been provided.
4. The text is single-spaced; uses a 12-point font; employs italics, rather than underlining (except with URL addresses); and all illustrations, figures, and tables are placed within the text at the appropriate points, rather than at the end.
5. The text adheres to the stylistic and bibliographic requirements outlined in the [Author Guidelines](#), which is found in About the Journal.
6. If submitting to a peer-reviewed section of the journal, the instructions in [Ensuring a Blind Review](#) have been followed.

COPYRIGHT NOTICE

Authors who publish with INJEC agree to the following terms:

1. Authors retain copyright and grant INJEC the right of first publication with the work simultaneously licensed under a [Creative Commons Attribution 4.0 International License](#) that allows others to remix, adapt and build upon the work with an acknowledgment of the work's authorship and of the initial publication in INJEC.
2. Authors are permitted to copy and redistribute the journal's published version of the work (e.g., post it to an institutional repository or publish it in a book), with an acknowledgment of its initial publication in INJEC.

INJEC requires a formal written declaration and transfer of copyright from the author(s) for each article published. We, therefore, ask you to complete and return this form, retaining a copy for your own records. Your cooperation is essential and appreciated. Any delay will result in a delay in publication.

PRIVACY STATEMENT

The names and email addresses entered in this journal site will be used exclusively for the stated purposes of this journal and will not be made available for any other purpose or to any other party.

TITLE PAGE TEMPLATE

Title of Manuscript

(The title of manuscript should be “Capitalized Each Word”, bold, double space, times new roman font style, and 12pt font size)

First Author *, Second Author and Third author*****

The manuscript has main author and co-authors. Author names should not contain academic title or rank. Indicate the corresponding author clearly for handling all stages of pre-publication and post-publication. Consist of full name author and co-authors. A corresponding author is a person who is willing to handle correspondence at all stages of refereeing and publication, also post-publication.

First author, Second author, Third author and others:

1. Name : (Author names should not contain academic title or rank)
2. Affiliation :
3. E-mail :
4. Orchid ID : (if the author doesn't have the ID please register at <https://orcid.org/>)
5. Contribution to this Manuscript:

Corresponding Author

Name : (please mention one of the author[s] above)

A corresponding author is a person who is willing to handle correspondence at all stages of

refereeing and publication, also post-publication. The Orchid ID is compulsory for the corresponding author, while for the other author(s) is optional.

Acknowledgement

Funding Source

You are requested to identify who provided financial support for the conduct of the research and/or preparation of the article and to briefly describe the role of the sponsor(s) in the whole research process.

MAIN MANUSCRIPT TEMPLATE

MAIN MANUSCRIPT FORMAT (FULL TEXT IN ENGLISH)

Must be written in Times New Roman Font 12

- ➔ Margin 1 inch or 2.54 cm (top, left, right, and bottom)
- ➔ A4 paper size
- ➔ Single space for all.
- ➔ All references should be used “Mendeley”

TITLE (Times New Roman 12)

The title of the paper should be concise and informative. Avoid abbreviations and formula where possible. It should be written clearly and concisely describing the contents of the research.

ABSTRACT (Times New Roman 11)

The abstract comes after title page in the manuscript. Abstract must be integrated and independent which is consist of introduction and purpose, methods, results, conclusion and suggestion. However, the abstract should be written as a single paragraph without these headers. For this reason, references should be avoided. Also, non-standard or uncommon abbreviations should be avoided, but if essential they must be defined at their first mention in the abstract itself. Abstract must be written using 150 until 250 words which has no reference and accompanied keywords.

KEYWORDS (Times New Roman 11)

The keywords should be avoiding general and plural terms and multiple concepts. Do not use words or terms in the title as keywords. These keywords will be used for indexing purposes. Keywords should not more than 5 words or phrases in alphabetical order.

INTRODUCTION (Times New Roman 11)

State the objectives of the work and provide an adequate background, avoiding a detailed literature survey or a summary of the results. Explain how you addressed the problem and clearly state the aims of your study. As you compose the introduction, think of readers who are not experts in this field. Please describe in narrative format and not using sub-chapter.

MATERIALS AND METHODS (Times New Roman 11)

Explain in detail about the research design, settings, time frame, variables, population, samples, sampling, instruments, data analysis, and information of ethical clearance fit test.

RESULTS (Times New Roman 11)

Result should be presented continuously start from main result until supporting results. Unit of measurement used should follow the prevailing international system. It also allowed to present diagram, table, picture, and graphic followed by narration of them.

Figures and Tables placed separated in last page of manuscript and must be as follow:

Figures, tables, and diagram should be **editable** ones.

Figures's remarks placed in bottom with before 4pt. The title of figures placed after the remarks with single space.

The title of tables should be written first with Times New Roman 11, single space and after 6pt. Content of the tables should be written using Times New Roman 10 single space and the remarks of tables placed in the bottom with Times New Roman 10, single space and before 4pt. (for example)

Table 1. Characteristics of Respondents

	Treatment Group		Control Group		Total		Homogeneity
	n	%	n	%	n	%	
Gender							
Male	11	39.3	14	50	25	44.6	0.259
Female	17	60.7	14	50	31	55.4	
Age							
18- 25 years	2	7.1	6	21.4	8	14.3	0.065
26-35 years	5	17.9	3	10.7	8	14.3	
36-45 years	3	10.3	5	17.9	8	14.3	
46-55 years	15	53.6	7	25	22	39.3	
56-60 years	3	10.7	7	25	10	17.8	
Religion							
Islam	28	100	27	96.8	55	98.2	0.043
Kristen	0	0	1	3.2	1	1.8	
Marital status							
Married	25	89.3	20	71.44	45	80.4	0.000
Single	3	10.7	7	25	10	17.8	
Divorce	0	0	1	3.6	1	1.8	
Level of Education							
Primary School	7	25	9	32.1	16	28.6	0.150
Junior High School	5	17.9	4	14.3	9	16.1	
Senior High School	15	53.6	11	39.3	26	46.4	
Bachelor	1	3,6	4	14.3	5	8.9	
Occupation							
Farmers	1	3.6	1	3.6	2	3.6	1.000
Employee	8	28.6	5	17.9	13	23.2	
Salesman	7	25	9	32.1	16	28.6	
Soccer player	0	0	1	3.6%	1	1.8	
Housewife	6	21.4	4	14.3%	10	17.8	
College student	1	3.6	2	7.1%	3	19.6	
Does not work	5	17.9	6	21.4%	11	5.4	
Side Effects							
Severe	2	7.1	5	17.9 %	7	12.5	0.015
Mild	26	92.9	23	82.1%	49	87.5	

Give explanation about the table and cite the number of tables. E.g. Table 1. Etc.

DISCUSSION (Times New Roman 11)

Describe the significance of your findings. Consider the most important part of your paper. Do not be verbose or repetitive, be concise and make your points clearly. Follow a logical stream of thought; in general, interpret and discuss the significance of your findings in the same sequence you described them in your results section. Use the present verb tense, especially for established facts; however, refer to specific works or prior studies in the past tense. If needed, use subheadings to help organize your discussion or to categorize your interpretations into themes. The content of the discussion section includes: the explanation of results, references to previous research, deduction, and hypothesis.

CONCLUSIONS (Times New Roman 11)

Conclusion should be explained clearly related to hypothesis and new findings. Suggestion might be added contains a recommendation on the research done or an input that can be used directly by consumer.

ACKNOWLEDGMENT (If any) (Times New Roman 11)

Acknowledgments should be limited to the appropriate professionals who contributed to the paper, including technical help and financial or material support, as well as any general support by a department chairperson.

CONFLICT OF INTEREST (Times New Roman 11)

Please ensure that a ‘Declaration of Conflicting Interests’ statement is included at the end of your manuscript, after any acknowledgements and prior to the references. If no conflict exists, please state that ‘The Author(s) declare(s) that there is no conflict of interest’.

REFERENCES (Times New Roman 11)

The author-year notation system is required and completed. All reference mentioned should be written down in reference using American Psychological Association (APA) 6th edition style and arranged from A to Z. Articles have minimal 25 recent references (last 10 years) and 80% is journal. References from journal publication should be provided by DOI. All cited references must be mentioned in in-text citation. If you are Mendeley user, please download the reference style here <https://www.zotero.org/styles?q=apa>. For example:

Reference to a Journal Publication:

Efendi, F., Chen, C. M., Nursalam, N., Indarwati, R., & Ulfiana, E. (2016). Lived experience of Indonesian nurses in Japan: A phenomenological study. *Japan Journal Nursing Science*, 13(2), 284-293. doi:10.1111/jjns.12108

Reference to a Book:

Kurniati, & Efendi, F. (2013). *Human Resources for Health Country Profile of Indonesia*. New Delhi: WHO South-East Asia Region.

Reference to a Website:

MoH. (2013). *Sosialisasi Global Code of Practice on The International Recruitment of Health Personnel [Dissemination Global Code of Practice on The International Recruitment of Health Personnel]*. Retrieved December 2, 2014, from <http://bppsdmk.depkes.go.id/tkki/data/uploads/docs/workshop-sosialisasi-gcp.pdf>

Reference in Conference:

Nursalam, Efendi, F., Dang, L. T. N., & Arief, Y. S. (2009). Nursing Education in Indonesia: Today's and Future Role. Paper presented at the Shanghai International Conference, Shanghai.