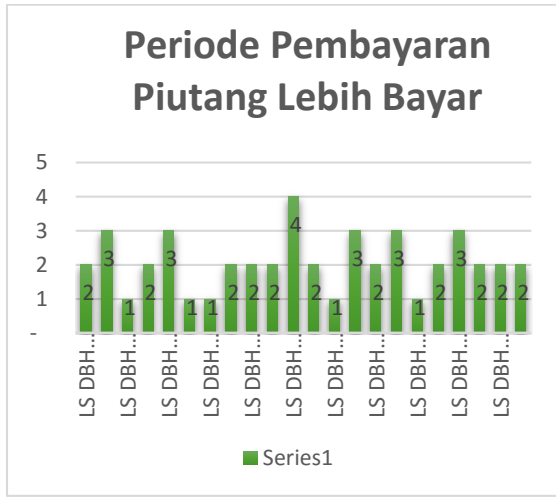


LAMPIRAN

Tabel 1 Jangka Waktu Pembayaran Piutang Lebih Bayar DBH SDA



Tabel 2 Kertas Kerja Periode Pembayaran Piutang LB DBH SDA

Jenis Transfer	LKTD TA 2012	LKTD Smt I TA 2013	LKTD TA 2013	TA	LKTD Smt I TA 2014	LKTD TA 2014	LKTD Smt I TA 2015	LKTD TA 2015	LKTD Smt I TA 2016
LB DBH Minyak Bumi TA 2013	-	-	411.373.883	411.373.883	-	-	-	-	-
LB DBH Minyak Bumi TA 2014	-	-	-	-	-	-	1.376.508.811.633	1.376.039.528.693	456.640.771.019
LB DBH Gas Bumi TA 2012	2.565.984.588	-	-	-	-	-	-	-	-
LB DBH Gas Bumi TA 2013	-	-	26.308.324.695	26.308.324.695	-	-	-	-	-
LB DBH Gas Bumi TA 2014	-	-	-	-	-	-	446.447.412.810	446.447.412.810	152.216.256.823
LB DBH Gas Bumi Otsus TA 2015	-	-	-	-	-	-	-	42.212.692.537	-
LB DBH Pertum - Iuran Tetap TA 2012	1.819.818.861	-	-	-	-	-	-	-	-
LB DBH Pertum - Iuran Tetap TA 2013	-	-	15.158.454.542	11.516.957.605	-	-	-	-	-
LB DBH Pertum - Iuran Tetap TA 2014	-	-	-	-	-	-	-	203.583.222.393	10.194.560.908
LB DBH Pertum - Royalty TA 2012	20.268.186.733	2.300.000.000	-	-	-	-	-	-	-
LB DBH Pertum - Royalty TA 2013	-	-	15.203.334.093	7.722.315.628	328.126.130	-	-	5.723.151.786	-
LB DBH Pertum - Royalty TA 2014	-	-	-	-	-	-	-	1.379.010.994.062	357.305.466.091
LB DBH Kehutanan - IHPH TA 2012	492.896.178	-	-	-	-	-	-	-	-
LB DBH Kehutanan - IHPH TA 2014	-	-	-	-	-	-	66.347.437.489	66.347.437.489	4.139.669.351
LB DBH Kehutanan - PSDH TA 2013	-	-	2.495.180.902	2.490.770.544	-	-	-	-	-
LB DBH Kehutanan - PSDH TA 2014	-	-	-	-	-	-	386.538.827.779	386.538.827.779	52.449.713.228
LB DBH Kehutanan - DR TA 2012	654.308.229	-	-	-	-	-	-	-	-
LB DBH Kehutanan - DR TA 2013	-	-	11.966.303.364	11.802.939.902	-	-	-	-	-
LB DBH Kehutanan - DR TA 2014	-	-	-	-	-	-	268.147.026.264	268.147.026.264	136.522.756.351
LB DBH Panas Bumi - Iuran Tetap TA 2013	-	-	1.732.551.362	1.732.551.362	-	-	-	-	-
LB DBH Panas Bumi - Iuran Tetap TA 2014	-	-	-	-	-	-	3.293.404.905	3.293.404.905	-
LB DBH Perikanan TA 2014	-	-	-	-	-	-	18.941.545.236	18.941.545.236	-

TOTAL	25.801.194.589	2.300.000.000	73.275.522.841	61.985.233.619	328.126.130	2.566.224.466.116	4.196.285.243.954	1.169.469.193.771
-------	----------------	---------------	----------------	----------------	-------------	-------------------	-------------------	-------------------

Tabel 3 Piutang Lebih Bayar TKDD Diestimasi



Tabel 4 Pengakuan Piutang LB DBH SDA Diestimasi

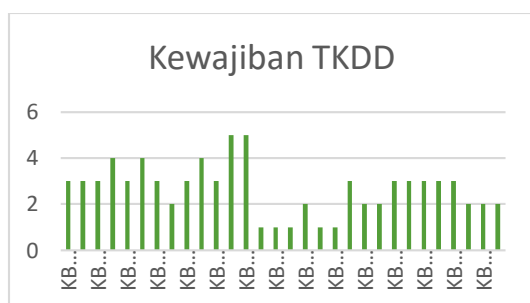
Jenis Piutang Diestimasi	Semester I TA 2016	TA 2015	TA 2014	TA 2013
LB DBH Minyak Bumi	-	-	22.297.950.900	-
LB DBH Gas Bumi	-	-	661.363.345.100	-
LB DBH Landrent	-	-	311.062.107.530	-
LB DBH Royalti	-	-	2.321.429.698.549	-
LB DBH IIUPH/IHPH	-	-	34.853.452.106	-
LB DBH PSDH	-	-	456.352.085.518	-
LB DBH Dana Reboisasi	-	-	230.817.226.237	-
LB DBH Panas Bumi	-	-	2.564.619.132	-
LB DBH SDA TA 2015	3.305.688.896.638	3.305.688.896.638	-	-
Total	3.305.688.896.638	3.305.688.896.638	4.040.740.485.072	0

Tabel 5 Kertas Kerja Pencatatan Piutang Lebih Bayar DBH SDA Diestimasi Periode TA 2012-Semester I 2016

Jenis Transfer DBH Diestimasi	LKTD TA 2012	LKTD TA 2013	LKTD TA 2014	LKTD TA 2015	LKTD Smt I TA 2016
LB DBH Minyak Bumi TA 2012	833.088.425.476	-	-	-	-
LB DBH Minyak Bumi TA 2014	-	-	22.297.950.900	-	-
LB DBH Gas Bumi TA 2012	1.719.846.917.304	-	-	-	-
LB DBH Gas Bumi TA 2014	-	-	661.363.345.100	-	-
LB DBH Kehutanan - IHPH TA 2012	59.040.728.688	-	-	-	-
LB DBH Kehutanan - IHPH TA 2014	-	-	34.853.452.106	-	-

LB DBH Kehutanan - PSDH TA 2014	-	-	456.352.085.518	-	-
LB DBH Kehutanan - DR TA 2014	-	-	230.817.226.237	-	-
LB DBH Pertum - Landrent TA 2014	-	-	311.062.107.530	-	-
LB DBH Pertum - Royalty TA 2014	-	-	2.321.429.698.549	-	-
LB DBH Panas Bumi TA 2012	10.536.184.625	-	-	-	-
LB DBH Panas Bumi TA 2014	-	-	2.564.619.132	-	-
LB DBH SDA TA 2015	-	-	-	3.305.688.896.638	3.305.688.896.638
	2.622.512.256.093	-	4.040.740.485.072	3.305.688.896.638	3.305.688.896.638

Tabel 6 Kewajiban TKDD



Grafik 1 Pembayaran Kewajiban DBH PSDH dan DBH DR

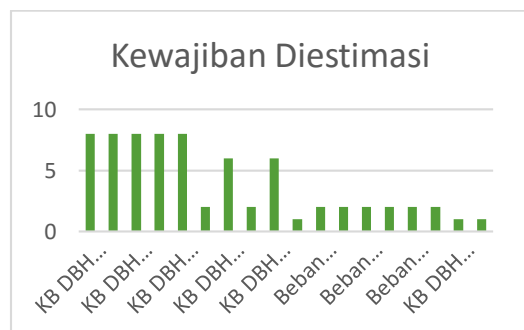


Tabel 7 Kertas Kerja Periode Pembayaran Kewajiban TKDD

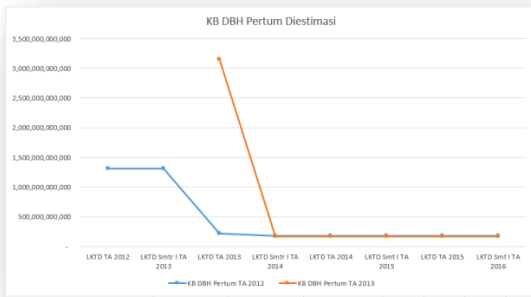
Jenis Transfer	LKTD TA 2012	LKTD Smt I TA 2013	LKTD TA 2013	LKTD Smt I TA 2014	LKTD TA 2014	LKTD Smt I TA 2015	LKTD TA 2015	LKTD Smt I TA 2016
KB DBH Minyak Bumi TA 2012	357,460,66 9,187	357,460,66 9,187	357,460,669, 187	-	-	-	-	-
KB DBH Minyak Bumi TA 2013	-	-	6,481,707,55 1,896	6,481,707,55 1,896	4,367,227,05 4,896	-	-	-

KB DBH Gas Bumi TA 2013	-	-	6,484,175,55 1,215	6,484,175,55 1,215	4,604,434,01 8,215	-	-	-
KB DBH Iuran Tetap TA 2008-2011	857,305,63 5	857,305,63 5	32,812,516,6 36	21,454,372,7 08	-	-	-	-
KB DBH Iuran Tetap TA 2013	-	-	15,082,747,6 82	123,932,017, 429	95,758,880,8 33	-	-	-
KB DBH Royalti TA 2008-2012	187,897,97 8,643	187,897,97 8,643	891,733,871, 546	59,971,197,2 44	-	-	-	-
KB DBH Royalti Ta 2013	-	-	349,720,523, 029	2,937,257,29 2,617	2,257,731,06 5,464	-	-	-
KB DBH Pabum TA 2012	-	-	3,383,475,48 8	475,488	-	-	-	-
KB DBH Pabum TA 2013	-	-	251,514,582, 221	251,514,582, 221	251,514,582, 221	-	-	-
KB DBH IIUPH/IHPH TA 2011-2012	3,509,146,5 90	3,509,146,5 90	19,883,181,5 89	181,589	-	-	-	-
KB DBH IIUPH Tahun 2012	-	-	1,764,000,00 0	1,764,000,00 0	1,764,000,00 0	-	-	-
KB DBH PSDH TA 2006-2012	9,562,847,4 03	9,562,847,4 03	14,538,730,5 06	223,493,663	223,493,663	-	-	-
KB DBH DR TA 2007-2012	13,890,366, 706	13,890,366, 706	12,554,486,7 98	307,134,866	306,648,068	-	-	-
KB DBH Kehutanan IIUPH TA 2013	-	-	-	-	47,746,333,6 13	-	-	-
KB DBH Kehutanan PSDH TA 2013	-	-	-	-	115,933,371, 598	-	-	-
KB DBH Kehutanan DR TA 2013	-	-	-	-	168,396,247, 141	-	-	-
KB DBH Kehutanan TA 2013	-	-	322,483,113, 858	331,908,178, 532	-	-	-	-
KB DBH IIUPH TA 2010	-	-	-	-	2,835,000,00 0	-	-	-
KB DBH PSDH TA 2011	-	-	-	-	1,621,434	-	-	-
KB DBH Perikanan TA 2013	-	-	31,161,370,0 00	31,161,370,0 00	31,161,370,0 00	-	-	-
KB DBH Minyak Bumi TA 2014	-	-	-	-	377,327,898, 179	377,327,914,787	-	-
KB DBH Gas Bumi TA 2014	-	-	-	-	3,885,140,01 7,247	3,885,140,000,000	-	-
KB DBH Kehutanan IIUPH TA 2014	-	-	-	-	89,432,853,3 43	89,432,853,343	89,432,853,343	-
KB DBH Kehutanan PSDH TA 2014	-	-	-	-	24,041,896,0 32	24,041,896,032	24,041,896,032	-
KB DBH Kehutanan DR TA 2014	-	-	-	-	91,560,073,0 41	91,560,073,041	91,560,073,041	-
KB DBH Pabum Iuran Tetap TA 2014	-	-	-	-	6,755,274,74 5	6,755,274,745	6,755,274,745	-
KB DBH Pabum Existing TA 2014	-	-	-	-	148,092,521, 286	148,092,521,286	148,092,521,286	-
KB DBH Pertum Iuran Tetap TA 2014	-	-	-	-	-	148,382,641,461	148,382,641,461	-
KB DBH Pertum TA 2013	-	-	-	-	-	5,723,151,786	5,723,151,786	-
KB DBH Pertum Royalty TA 2014	-	-	-	-	-	1,688,153,723,146	1,688,153,723,146	-
TOTAL	573,178,31 4,164	573,178,31 4,164	15,269,976,3 71,651	16,725,377,3 99,468	11,945,033,6 87,146	4,622,350,53 3,873	6,464,610,049,627	2,202,142,134,840

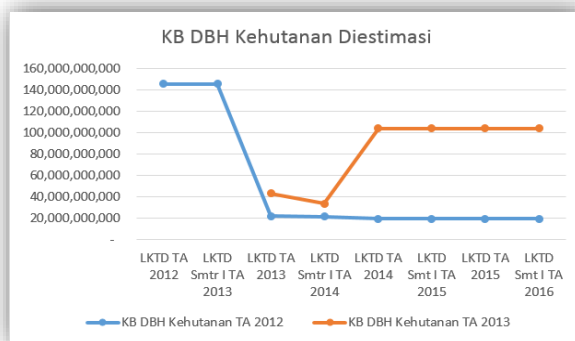
Tabel 8 Kewajiban Diestimasi



Grafik 2 Trend Pencatatan KB DBH Pertum Diestimasi TA 2012 – Semester I TA 2016



Grafik 3 Trend Pencatatan KB DBH Kehutanan Diestimasi TA 2012 – Semester I TA 2016



Tabel 9 Kewajiban Diestimasi yang Direklas Periode TA 2014 – 2015

Kode Akun	Uraian	2014 (Audited)	Semester I TA 2015	TA 2015 (Audited)
612511	DBH SDA Kehutanan KB IIUPH TA 2014	29,259,004,509	-	-
612411	DBH SDA Panas Bumi KB Iuran Tetap TA 2014	7,873,277,179	-	-
612412	KB Eksisting TA 2014	148,092,521,286	-	-
612312	DBH SDA Pertambangan Umum KB Royalty TA 2014	307,435,693	307,435,693	-

185,532	
,238,66	307,43
7	5,693 -

Tabel 10 Kertas Kerja Periode Pembayaran Kewajiban Diestimasi DBH SDA

Jenis Transfer	LKTD TA 2012	LKTD Smt. ITA 2013	LKDTA 2013	LKTD Smt. ITA 2014	LKDTA 2014	LKTD Smt. ITA 2015	LKDTA 2015	LKTD Smt. ITA 2016
KB DBH Iuran Tetap TA 2012	99.127.647.326	99.127.647.326	47.814.476.737	31.921.890.153	31.921.890.153	31.921.890.153	31.921.890.153	31.921.890.153
KB DBH Royalti TA 2012	1.207.398.064.643	1.207.398.064.643	167.381.318.130	143.654.058.501	143.654.058.501	143.654.058.501	143.654.058.501	143.654.058.501
KB DBH Dana Reboisasi TA 2012	111.345.008.339	111.345.008.339	8.389.931.929	8.083.283.861	8.083.283.861	8.083.283.861	8.083.283.861	8.083.283.861
KB DBH PSDH TA 2012	11.353.749.723	11.353.749.723	6.940.889.264	6.717.095.601	6.717.095.601	6.717.095.601	6.717.095.601	6.717.095.601
KB DBH IU/PH/HPH TA 2012	23.066.758.360	23.066.758.360	6.585.243.360	6.585.243.360	4.801.243.360	4.801.243.360	4.801.243.360	4.801.243.360
KB DBH Perikanan TA 2012	589.624.560	589.624.560	-	-	-	-	-	-
KB DBH Perum TA 2013	-	-	3.148.050.620.218	171.728.271.596	171.728.271.596	171.728.271.596	171.728.271.596	171.728.271.596
KB DBH Royalti TA 2014	-	-	-	-	307.435.689	307.435.689	-	-
KB DBH Kehutanan TA 2013	-	-	43.001.244.967	33.408.366.473	103.750.943.250	103.750.943.250	103.750.943.250	103.750.943.250
KB DBH IU/PH TA 2014	-	-	-	-	29.259.004.509	-	-	-
Beban DBH Minyak Bumi	-	-	-	-	-	-	756.183.099.493	756.183.099.493
Beban DBH Gas Bumi	-	-	-	-	-	-	4.879.437.772.392	4.879.437.772.392
Beban DBH Perum Iuran Tetap	-	-	-	-	-	-	329.548.032.807	329.548.032.807
Beban DBH Kehutanan PSDH	-	-	-	-	-	-	424.549.849.818	424.549.849.818
Beban DBH Kehutanan DR	-	-	-	-	-	-	347.603.965.853	347.603.965.853
Beban DBH Panas Bumi	-	-	-	-	-	-	380.808.890.982	380.808.890.982
KB DBH PaBum (Iuran Tetap) TA 2014	-	-	-	-	7.873.271.179	-	-	-
KB DBH PaBum (Eksisting) TA 2014	-	-	-	-	148.092.521.286	-	-	-
TOTAL	1.452.820.852.951	1.452.820.852.951	3.428.144.204.605	402.078.029.545	656.189.024.989	470.964.222.015	7.588.788.397.668	7.588.788.397.668