

# INTERNATIONAL CONFERENCE



The Second International Conference on  
Engineering and Technology Development

# 2<sup>nd</sup> ICETD 2013

27, 28, 29 August 2013, Bandar Lampung, Indonesia



**PROCEEDINGS**



In  
Cooperations  
With :



الجامعة الإسلامية العالمية  
INTERNATIONAL ISLAMIC UNIVERSITY MALAYSIA  
بوتنيونينى الشارقة انتار اقطرا ماليزيا



Hosted by :

Faculty of Engineering and Faculty of Computer Science,  
Bandar Lampung University (UBL), Indonesia

# 2<sup>nd</sup> ICETD 2013

THE SECOND INTERNATIONAL CONFERENCE  
ON ENGINEERING AND TECHNOLOGY DEVELOPMENT

28 -30 January 2013  
Bandar Lampung University (UBL)  
Lampung, Indonesia

## PROCEEDINGS

Organized by:



Faculty of Computer Science and Faculty of Engineering  
Bandar Lampung University (UBL)  
Jl. Zainal Abidin Pagar Alam No.89 Labuhan Ratu, Bandar Lampung, Indonesia  
Phone: +62 721 36 666 25, Fax: +62 721 701 467  
website : [www.ubl.ac.id](http://www.ubl.ac.id)

## PREFACE

The Activities of the International Conference is in line and very appropriate with the vision and mission of Bandar Lampung University (UBL) to promote training and education as well as research in these areas.

On behalf of the Second International Conference on Engineering and Technology Development ( 2<sup>nd</sup> ICETD 2013) organizing committee, we are very pleased with the very good response especially from the keynote speaker and from the participans. It is noteworthy to point out that about 80 technical papers were received for this conference.

The participants of the conference come from many well known universities, among others : University Kebangsaan Malaysia – Malaysia, APTIKOM – Indonesia, Institut Teknologi sepuluh November – Indonesia, Surya Institute – Indonesia, International Islamic University – Malaysia, STMIK Mitra Lampung – lampung, Bandung Institut of Technology – Bandung, Lecture of The Malahayati University, B2TP – BPPT Researcher – lampung, Starch Technology Center – Lampung, Universitas Islam Indonesia – Indonesia, Politeknik Negeri Malang – Malang, University of Kitakyushu – Japan, Gadjah Mada University – Indonesia, Universitas Malahayati – Lampung, Lampung University – lampung, Starch Technology Center – Lampung, Universitas Riau – Riau, Hasanuddin University – Indonesia, Diponegoro University – Indonesia, King Abdulaziz University – Saudi Arabia, Parahyangan Catholic University – Indonesia , National Taiwan University– Taiwan, Surakarta Christian University – Indonesia, Sugijapranata Catholic University – Indonesia, Semarang University – Indonesia, University of Brawijaya – Indonesia, PPKIA Tarakanita Rahmawati – Indonesia, Kyushu University, Fukuoka – Japan, Science and Technology Beijing – China, Institut Teknologi Sepuluh Nopember – Surabaya, Researcher of Starch Technology Center, Universitas Muhammadiyah Metro – Metro, National University of Malaysia – Malaysia.

I would like to express my deepest gratitude to the International Advisory Board members, sponsor and also to all keynote speakers and all participants. I am also gratefull to all organizing committee and all of the reviewers who contribute to the high standard of the conference. Also I would like to express my deepest gratitude to the Rector of Bandar Lampung University (UBL) who give us endless support to these activities, so that the conference can be administrated on time

Bandar Lampung, 29 August 2013-08-26

Mustofa Usman, Ph.D  
2<sup>nd</sup> ICETD Chairman

# **PROCEEDINGS**

## **2<sup>nd</sup> ICETD 2013**

The Second International Conference  
On Engineering And Technology Development

**28 -30 January 2013**

### **INTERNATIONAL ADVISORY BOARD**

Y. M Barusman, Indonesia  
Ahmad F. Ismail, Malaysia  
Mustofa Usman, Indonesia  
Moses L. Singgih, Indonesia  
Andreas Dress, Germany  
Faiz A.M Elfaki, Malaysia  
Warsono, Indonesia  
Raihan Othman, Malaysia  
Zeng Bing Zen, China  
Tjin Swee Chuan, Singapore  
Khomsahrial R, Indonesia  
Rony Purba, Indonesia  
Alex Tribuana S, Indonesia  
Hon Wei Leong, Singapore  
Imad Khamis, USA  
Rozlan Alias, Malaysia  
Rudi Irawan, Indonesia  
Gusri Ibrahim, Indonesia  
Jamal I Daoud, Malaysia  
Riza Muhida, Indonesia  
Heri Riyanto, Indonesia  
Agus Wahyudi, Indonesia  
Lilies Widojoko, Indonesia

# **PROCEEDINGS**

## **2<sup>nd</sup> ICETD 2013**

The Second International Conference  
On Engineering And Technology Development

**28 -30 January 2013**

### **STEERING COMMITTEE**

#### **Executive Advisors**

Dr. M. Yusuf S. Barusman  
Andala R. P. Barusman, MA.Ec

#### **Chairman**

Mustofa Usman, Ph.D

#### **Co-Chairman**

Dr. Ir. Hery Riyanto, MT  
Ahmad Cucus, S.Kom., M.Kom

#### **Secretary**

Marzuki, S.Kom., M.Kom  
Maria Shusanti Febrianti, S.Kom., M.Kom

#### **Technical Committee**

Indyah Kumoro, ST. IAI  
Ardiansyah, ST., MT  
Sofiah Islamiah, ST. MT  
Taqwan Thamrin, ST., MSc  
Dina Ika Wahyuningsih, S.Kom  
Agus Sukoco, M.Kom  
Hj. Susilowati, ST. MT  
Haris Murwadi, ST, MT  
Robby Yuli Endra, S.Kom., M.Kom  
Fenty Ariani, S.Kom., M.Kom

#### **Treasure**

Samsul Bahri, SE  
Dian Agustina, SE

# **PROCEEDINGS**

## **2<sup>nd</sup> ICETD 2013**

The Second International Conference  
On Engineering And Technology Development

**28 -30 January 2013**

### **ORGANIZING COMMITTEE**

#### **Chair Person**

Dr. Ir. Hery Riyanto, MT

#### **Vice Chair Person**

Yuthsi Aprilinda, S.Kom., M.Kom

#### **Treasure**

Dian Agustina, S.E

#### **Secretary**

Aprizal, ST. MT

Ir. Tjejeng Sofyan, MM

Ir. Muhammad Zein, MT

Ir. Bambang Pratowo, MT

#### **Special Events**

Ir. Juniardi, MT

Ir. Indra Surya, MT

Ir. Sugito, MT

DR. Baginda Simaibang, M.Ed

Berry Salatar, S.Pd

Yanuar Dwi Prasetyo, S.Pd.I., M.A

#### **Receptionist**

Ir. Najamudin, MT

Kunarto, ST. MT

IB. Ilham Malik, ST. MT

Ir.A Ikhsan Karim, MT

Ir. Asikin, MT

Usman Rizal, ST., M.MSi

#### **Transportation and Acomodation**

Irawati, SE

Desi Puspita Sari, S.E

Tanto Lailam, S.H

Ilyas Sadad, S.T., M.T

**Publication and Documentation**

Ir. Indriati Agustina Gultom, M.M

Noning Verawati, S.Sos

Hesti, S.H

Rifandi Ritonga, SH

Violita, S.I.Kom

**Cosumption**

Dra. Yulfriwini, M.T

Wiwin Susanty, S.Kom., M.Kom

Fenty Ariani, S.Kom., M.Kom

Reni Nursyanti, S.Kom., M.Kom

Erlangga, S.Kom

Arnes Yuli Vandika, S.Kom

**Facility and Decoration**

Siti Rahma Wati, SE

Dina Ika Wahyuningsih, S.Kom

Zainal Abidin, SE

Ahyar Saleh, SE

Eko Suhardiyanto

Wagino

Sugimin

## Table Of Content

Organizing Committee .....	i
Table Of Content.....	v
Keynote Speaker	
1. Recent Advances in Biofuel Cell and Emerging Hybrid System <b>Abdul Aziz Ahmad and Raihan Othman</b> .....	1
2. Waste Utilization Study Tailing Gold Mine in Way Linggo-Lampung, as Fine Aggregate Materials for Producing Mortar Materials based on concept of Green Technology <b>Lilies Widodojoko &amp; Susilawati</b> .....	8
3. Infrastructure Health Monitoring System (SHM) Development, a Necessity for Maintance and Investigation <b>Prof. Dr. Priyo Suprobo, Faimun, Arie Febry</b> .....	17
4. Four Phases Quality Function Deployment (Qfd) By Considering Kano Concept, Time And Manufacturing Cost <b>Prof. Dr. Moses L Singgih, Dyah L. Trenggonowati, Putu D. Karningsih</b> ....	22



Speaker

1. Comparative Analysis for The Multi Period Degree Minimum Spanning Tree Problem  
**Wamiliana, Amanto, and Mustofa Usman**..... 39
2. Choosing The Right Software In Supporting The Successful of Enterprise ERP Implementation  
**Yodhie Yuniarthe, Idris Asmuni**..... 44
3. Climate Adaptive Technology In Maintaining Vernacularism Of Urban Kampong Case study: Kampung Adat (Indiginous) Mahmud, Bandung District, West Java  
**Marcus Gartiwa**..... 50
4. The Prospect Of Diesohol In Facing Fossil Fuel Crissis  
**M.C. Tri Atmodjo**..... 63
5. The Potential Of Agriculture And Forestry Biomass Wastes As Source Of Bioenergy  
**Hardoyo**..... 66
6. The Importance of Education Facility as Sustainable Urban Generation Tool  
**Fritz Akhmad Nuzir, Haris Murwadi and Bart Julien Dewancker** ..... 71
7. The implementation of Secton Method for Solving Systems of Non Linear Equations  
**Nur Rokhman** ..... 80
8. Quality Control Analysis Into Decrease The Level Defects On Coffee Product  
**Heri Wibowo, Sulastri and Emy Khikmawati** ..... 85
9. Public Transpotion Crisis In Bandar Lampung  
**Ida Bagus Ilham Malik** ..... 89
10. Geospatial Analysis of Land Use Change in Way Kuripan Watershed, Bandar Lampung City  
**Candra Hakim Van Rafi'1., Dyah Indriana Kusumastuti2., Dwi Jokowinarno**..... 99
11. Material Utilization Technology Of Agriculture And Forestry Waste  
**Hardoyo**..... 105
12. The Supply Chain System Of Cassava On The Tapioca Industry  
**Hardoyo**..... 108
13. Glass Technology In Natural Light Glasses On Aperture Element In The Architecture World  
**Muhammad Rija & MT Pedia Aldy** ..... 113

14. An Eksperimental Permeable Asphalt Pavement Using Local Material Domato Stone On Quality Of Porous Asphalt <b>Firdaus Chairuddin, Wihardi Tjaronge, Muhammad Ramli, Johannes Patanduk</b> .....	117
15. Coordination Of Architectural Concepts And Construction Systems <b>Eddy Hermanto.</b> .....	129
16. Seismic Assessment of RC Building Using Pushover Analysis <b>Riza Ainul Hakim.</b> .....	136
17. Viscosity and Liquidity Index Relation for Elucidating Mudflow Behavior <b>Budijanto Widjaja and Shannon Hsien-Heng Lee.</b> .....	143
18. The Use of Pozzolanic Material for Improving Quality of Strontium Liquid Waste Cementation in Saline Environment during Nuclear Waste Immobilization Process <b>Muhammad Yusuf, HayuTyasUtami, Tri SulistiyoHariNugroho, SusetyoHarioPutero</b> .....	148
19. Geospatial Analysis Of Land Use And Land Cover Changes For Discharge At Way Kualagaruntang Watershed In Bandar Lampung <b>Fieni Yuniarti, Dyah Indriana K, Dwi Joko Winarno.</b> .....	153
20. Wifi Network Design For High Performance <b>Heru Nurwarsito, , KasyfulAmron,BektiWidyaningsih</b> .....	161
21. Studi on The Efficiency Using Nature Materials in The Structural Elements of Reinforced Concrete Beam <b>Yasser , Herman Parung , M. Wihardi Tjaronge, Rudy Djamaluddin.</b> .....	167
22. The Research Of Slow Release Nitrogen Fertilizer Applied In Sugarcane (Saccharum Officinarum) For Green Energy Bioethanol <b>M.C. Tri Atmodjo, Agus Eko T. Nurul Rusdi, Sigit Setiadi, and Rina.</b> .....	179
23. Energy Utilization Technology Of Agriculture And Forestry Waste <b>Hardoyo.</b> .....	185
24. Implementation Of Fuzzy Inference System With Tsukamoto Method For Study Programme Selection <b>Fenty Ariani and Robby Yuli Endra.</b> .....	189
25. The Analysis of Video Conference With ITU Standarization (International Telecommunication Union) That Joining in Inherent At Bandar Lampung University <b>Maria Shusanti F, Happy Reksa</b> .....	201

26. The E-internal audit iso 9001:2008 based on accreditation form assessment matrix in study program for effectiveness of monitoring accreditation  
**Marzuki, Maria Shusanti F.** ..... 207
27. The Developing Of e-Consultations For Effectiveness of Mentoring Academy  
**Ahmad Cucus, Endang K** ..... 214
28. The Evaluation of information system performance in higher education case study with EUCS model at bandar lampung university  
**Reni Nursyanti, Erlangga.** ..... 221
29. The Analysis Of History Collection System Based On AndroidSmartphone With Qr Code Using Qr CodeCase Study: Museum Lampung  
**Usman Rizal, Wiwin Susanty, Sutrisno.**..... 230
30. Application of Complaint Handling by Approach Model of ISO 10002 : 2004 to Increase Complaint Services  
**Agus Sukoco and Yuthsi Aprilinda.** ..... 235
31. Towards Indonesian Cloud Campus  
**Taqwan Thamrin, Iing Lukman, Dina Ika Wahyuningsih** ..... 252
32. Bridging Router to ADSL Modem for Stability Network Connection  
**Arnes Yuli Vandika and Ruri Koesliandana.**..... 257
33. The Effect of Use Styrofoam for Flexural Characteristics of Reinforced Concrete Beams  
**Yasser , Herman Parung, M. Wihardi Tjaronge, Rudy Djamaluddin** ..... 261
34. The Estimation Of Bioethanol Yield From Some Cassava Variety  
**M.C. Tri Atmodjo**..... 273
35. Effect of Superficial Velocity of Pressure Difference on The Separation of Oil And Water by Using The T-Pipe Junctionl  
**Kms. Ridhuan and Indarto.**..... 277
36. The use of CRM for Customer Management at Cellular Telecommunications Industry  
**Ayu Kartika Puspa.**..... 293
37. Indonesian Puslit (Centre Of IT Solution) Website Analysis Using Webqual For Measuring Website Quality  
**Maria Shusanti Febrianti and Nurhayati.** ..... 297
38. The E-internal audit iso 9001:2008 based on accreditation form assessment matrix in study program for effectiveness of monitoring accreditation  
**Marzuki, Maria Shusanti F.** ..... 307

39. Enhancing Quality Software Through CMMI-ISO 9001:2008 and ISO 9126 <b>Agus Sukoco</b> .....	320
40. Value Analysis Of Passenger Car Equivalent Motorcycle (Case Study Kartini Road Bandar Lampung) <b>Juniardi, Aflah Efendi</b> .....	337
41. Alternative Analysis Of Flood Control Downstream Of Way Sekampung River <b>Sugito, Maulana Febramsyah.</b> .....	347
42. Analysis Of Fitness Facilities And Effective Use Of Crossing Road <b>Juniardi, Edi Haryanto.</b> .....	353
43. Study On Regional Development Work Environment Panjang Port Lands In Support Bandar Lampung City As A Service And Trade <b>Ir. A. Karim Iksan, MT, Yohn Ferry.</b> .....	359
44. Analytical And Experimental Study Bamboo Beam Concrete <b>Hery Riyanto, Sugito, Juli</b> .....	370
45. Comparative Analysis Of Load Factor Method Static And Dynamic Method (Case Study Akdp Bus Route Rajabasa - Bakauheni) <b>A. Ikhsan Karim, MT., Ahmad Zulkily.</b> .....	378
46. Optimization Utilization Of Water Resources dam Batutegei Using Method Of Linear Program <b>Aprizal, Hery Fitriyansyah</b> .....	386
47. Characteristics Generation Traffic Patterns And Movement In Residential Area (Case Study Way Kandis Residential Bandar Lampung) <b>Fery Hendi Jaya, Juniardi,</b> .....	392
48. Use Study On Slight Beam Reinforced Concrete Floor Plate in Lieu Of Secondary Beam <b>Hery Riyanto, Sugito, Lilies Widodjoko, Sjamsu Iskandar</b> .....	399
49. Observation Of The Effect Of Static Magnetic Field 0.1 Mt On A-Amylase Activity In Legume Germination <b>Rochmah Agustrina, Tundjung T. Handayani, and Sumardi.</b> .....	405
50. Effectiveness Analysis Of Applications Netsupport School 10 Based Iso / Iec 9126-4 Metrics Effectiveness <b>Ahmad Cucus, Nelcy Novelia</b> .....	413
51. Comparative Performance Analysis Of Banking For Implementing Internet Banking <b>Reza Kurniawan</b> .....	418

## **The E-internal audit iso 9001:2008 based on accreditation form assessment matrix in study program for effectiveness of monitoring accreditation**

Marzuki<sup>#1</sup>, Maria Shusanti F.<sup>#2</sup>

<sup>#</sup>informatics engineering study program, computer science faculty, bandar lampung  
university

Za. Pagar Alam. St. No. 26 Labuhan Ratu Bandar Lampung, Indonesia

<sup>1</sup>marzukird@yahoo.com

<sup>2</sup>suzanne\_maria1986@yahoo.com

**Abstract-***Accreditation is one of the form external quality guarantee system, it is a process that used in authorized institution in giving formal recognition that an institution has an ability to do certain activity. On the prepare processing there is some things that should be done by study program by using internal audit in periodic time. Internal audit is an independence activity, objectivity, and consultative which is designed to increase the organization's operation This scientific Writing will specifically focus on internal process audits in preparation for accreditation of Information Engineering Study Program at Bandar Lampung University with doing monitoring directly that can be accessed by some units in a management system based on guidelines and standards for internal audit issued by one of several organizations ISO, the quality management system ISO 9001: 2008, one of the requirements that must be fulfilled conduct periodic internal audits. This standard is very good when applied in the preparation of the accreditation process, accreditation assessment matrix as a guide in conducting internal audits.*

**Keywords:** Accreditation, ISO 9001:2008, Internal Audit

### **INTRODUCTION**

Accreditation is a form of external quality warranty system, it is the process that used in authorized institution in giving formal recognition that an institution has the ability to perform certain activities.

Thus, accreditation protect the public from fraud by parties who are not responsible. The characteristics of accreditation is the hallmark assessment by experts from outside that relevant institutions (external peer reviewers), and conducted by volunteers, for college organized a course of study. This activity begins by conducting a self-evaluation (self-evaluation) of the various / components of inputs, the process and product from the study program that want

to be accredited must submit its report to the accessors institution.

In accreditation preparation process there are some things that are done by one of the study program is periodically conduct audits, audit activity is an independent, objective and consulting designed to add value and improve an organization's operations. This is help the organization to achieve its purpose systematically, disciplined approach to evaluate and improve the effectiveness of risk management, internal control, etc.

But in the audit process in preparation for accreditation find some obstacles such as the company did the audit only as the madatory, without any the direct monitoring that can be accessed by multiple units within the management system. Other issues of monitoring and updating of data from internal audit,

which has been done with paper base, so that the consumption of paper for every invention and audit results and the report is presented in the form of printed reports. Guidelines and audit standards given by several organizations and one of them is ISO, on the quality management system ISO 9001: 2008 one of the requirements that must be fulfilled periodically internal audits. This standard is very good when applied in the preparation of the accreditation process, accreditation assessment matrix as a guide in audit conducting.

From the arise problems then arise some ideas to make the audit process easier to do, such as with audit implementation into electronic form, where updating the data and reports and the system process that is done by website media, so it can increase effectiveness of audit activity monitoring, updating data faster and more efficient in the preparation of reports that do not need a lot of resources.

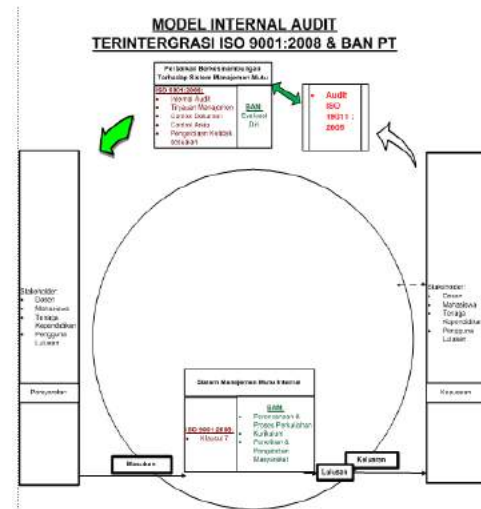
## PROCEDURE

This observation formulates the problem is how to compose e-Internal Audit ISO 9001:2008 Accreditation Forms-Based Matrix Assessment Study for Effectiveness Monitoring Program Accreditation which aims to: 1. Testing the mapping between the standard ISO 9001:2008 and form accreditation of bachelor degree study program

2. ISO 9001:2008 audit evaluates the matrix-based assessment accreditation forms with monitoring effectiveness assessment study program accreditation forms.

By implementing the ISO 9001:2008 standard accreditation forms study program and it must be done measuring use ISO 19011:2005 and the function of monitoring the effectiveness of accreditation, which is described in the internal model of the integrated audit of ISO 19011:2005 ISO 9001:2008 & BAN PT following: Picture.1 Model integrated

internal audit ISO 19011:2005 ISO 9001:2008 & BAN PT



## TECHNICAL ANALYSIS

Analysis and observation measuring use the method of comparative / comparisons that can be used to test the suitability of the difference in an experiment of output on a process. If it has an impact on the experimental results (experimental purposes), so it will seen a the significant difference, using the following equation:

$$vt = \sum_{i=1}^n \text{Capai}_i * \text{Bobot}_i$$

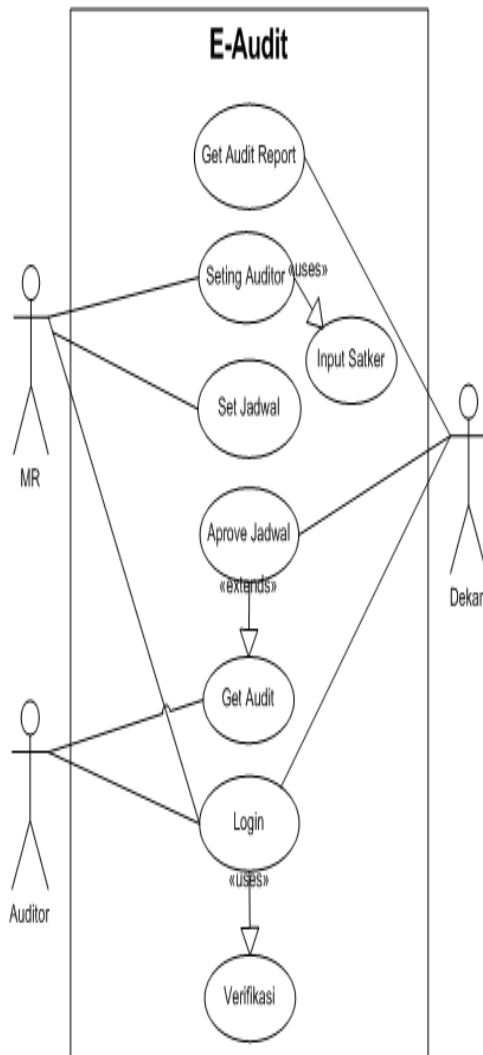
$$S = \sum (vt_1 - vt_2)$$

$$\text{Peningkatan} = \left( \frac{S}{vt_1} \right) * 100\%$$

## THE RESULT

In this observation developed software that adopt the audit process that used in quality management system. The actor's

involvement with the system shown in picture2.



Picture 2. Use Case

In picture Use case the actors that involved in the system is the Management Representative (MR) is an actor who plays a role regulating the audit process and controlling those activities in order to run as a standard procedure in force. MR in the quality management system is the chairman of quality warranty. While Dean is as the responsible management member and also as the peak/main management at faculty level. While the auditor is an

actor who performed an audit or as actors who carry out the whole process level courses in study program level.

*Pseudo-code : Audit*

*Narrativ: Computasi e'audit berdasarkan matrik penilaian*

*Input: Tabel auditor, satker, standar, temuan dan jadwal*

*Output: Temuan Rinci*

(1) **START**

(2) *Input User, Password*

(3) *Verification*

(4) *If User equal "MR"*

*Load MRPage*

*Set Satker*

*Set Auditor*

*Set Jadwal*

*Else*

*If User equal "Dekan"*

*Load DekanPage*

*If jadwal equal approve*

*Jadwal equal true*

*Else*

*Jadwal equal false*

*End if*

*Get audit Report*

*Else*

*If User Equal "Auditor"*

*Load AuditorPage*

*Select Uadit Number*

*Input nilaiCapai*

*Skor=Skor+NilaiCapai\*bobot*

*Input Temuan, Koreksi*

*Save Temuan Rinci*

*End if*

*End if*

*End if*

(5) **END**

Programming algorithm on e-audit process flow depicting the big outline on the application audit that listed on the pseudocode that is referred to others . Globally pseudocode application in this observation is illustrated in picture 3.

## THE IMPLEMENTATION

This observation uses a the implementation of software e-audit:

### 1. GUI Login

Gui login is interface that is used for validation of the parties has the right to be

able to go in and be able to use all the facilities that exist in the system.



picture.3: GUI Login

## 2. GUI Satker



GUI Satker is interface that used to provide input ideas to system-related parties, on this page, just fill the system on administrator membership such as number, name and unit of work, where do members workers.

picture.4. GUI Satker

## 3. Standard GUI

Standard GUI is the interface to give inform to the system about every standard that available on the standard accreditation forms and also the weight of scoring on every standard that has been taken from the accreditation assessment matrix.



picture.5 GUI Standards

## 4. GUI Auditor

Is the interface to form auditor groups of that is involved with each corresponding positions are determined by the representative management.



Picture .6 GUI Auditor

## 5. GUI Schedule

GUI schedule is used to provide audit schedule that is done based on agreement between the lead of author and other parties that will be audited.





Picture .7 GUI Schedule

### 6. GUI Findings

GUI Findings is interface that give suggestion to the system because of invention that available on audit process.

Fig.8 GUI Findings

### 7. Detailed Findings GUI

Is the interface that details the findings of the audit process on the level of each item audited standards. By performing calculations based on the existing achievements, calculated based on the weight of each item in accordance with standard valuation metrics.

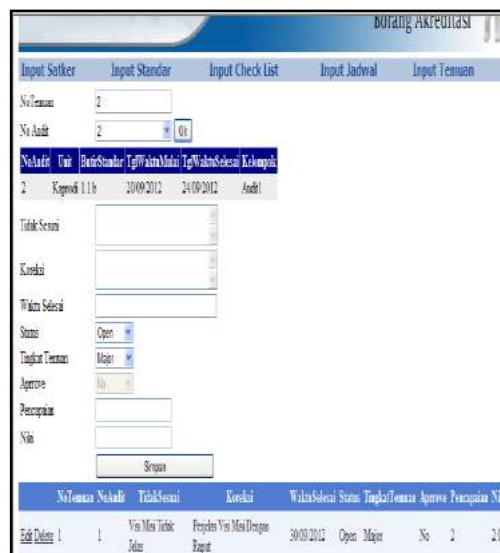


Fig.9. Detailed Findings

### 8. GUI Print Report

Interface is displayed to print the audit report.



Fig 10. Print Reports

with two implementation, By doing measuring the difference between the implementations I and Implementation II, and the result is in table 1 and table II

Table 1. Implementation I

No.	No. Penilaian	Butir Penilaian	Aspek Penilaian	Pencapaian	Bobot	Nilai*
1	1.1.a	Tertera	3	1.04	3.12	
2	1.1.b	Tertera	3	1.04	3.12	
-	-	-	-	-	-	
-	-	-	-	-	-	
98	7.2.2	Tertera	3	1.88	5.64	
99	7.3.1	Tertera	4	1.88	7.52	
100	7.3.2	Tertera	4	1.88	7.52	
Total						246.3
Nilai Akhir :						184.7

Table Implementation II

Analysis and research using the method of comparative / comparisons that can be used to test the suitability of the difference in an experiment on the output of a process. If it has an impact on the experimental results (experimental purposes), so it will seen a significant difference as shown in table 4.

No.	No. Butir Penilaian	Aspek Penilaian	Pencapaian	Bobot	Nilai*
1	1.1.a	Tertera	3	1.04	3.12
2	1.1.b	Tertera	3	1.04	3.12
-	-	-	-	-	-
-	-	-	-	-	-
98	7.2.2	Tertera	4	1.88	7.52
99	7.3.1	Tertera	4	1.88	7.52
100	7.3.2	Tertera	4	1.88	7.52
Total					335
Nilai Akhir :					251.3

Uraian	Implementasi I	Implementasi II
Total nilai	246.3	335
Nilai akhir	184.7	251.3

$X = \text{Implementasi II} - \text{Implementasi I}$   
(1)

$\text{Peningkatan} = X / \text{Implementasi I} * 100$   
(2)

Maka hasil komparasi adalah sebagai berikut:

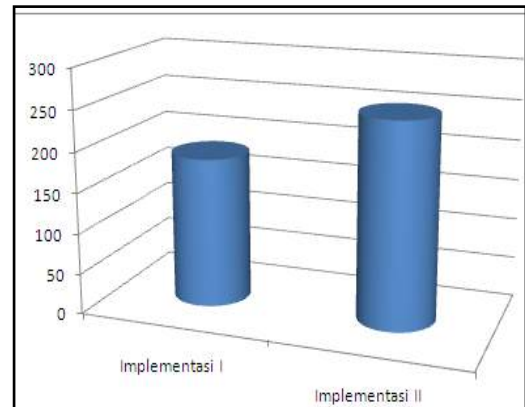
$$X = 251.3 - 184.7$$

$$= 66.6$$

$$\text{Peningkatan} = 66.6 / 184.7 * 100$$

$$= 36.058\%$$

So it can be seen improvement using the graph in picture 11.



Picture 11. Comparison Charts

## CONCLUSION

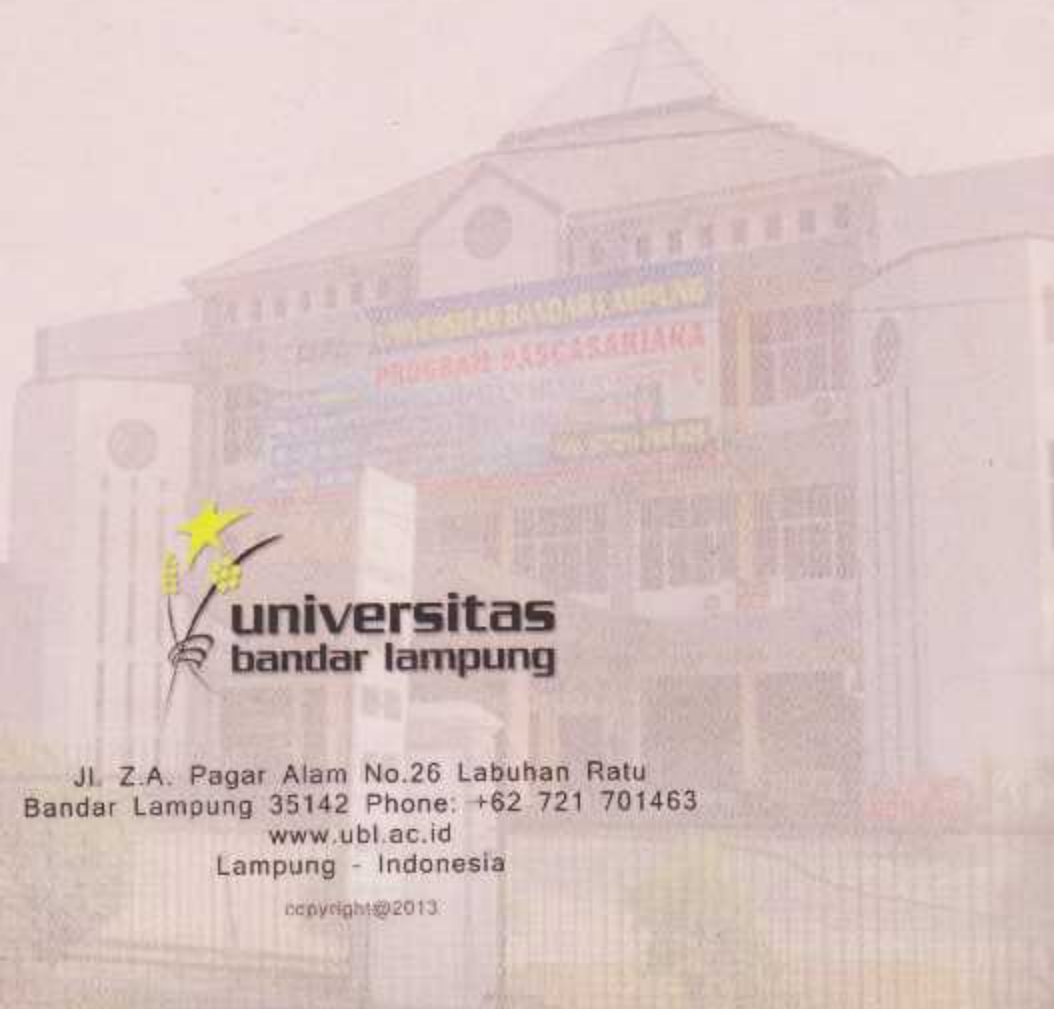
After analyzing the results of the implementation I and implementation II, this observation find some important invention that can be formulated on the conclusion, such as:

1. Improved assessment (final grade) in this observe showed an increase in the value of the accreditation is 36 058%.
2. The application of e-assessment matrix accreditation forms can increase the effectiveness of monitoring accreditation S1.

## REFERENCES

- [1] Dudek-Burlikowska, M. (2010). *Aspects Of Improving The Organization Directed To The Quality*. International Scientific Journal.
- [2] Durai Anand Kumar, D. V. (2011). A Study on ISO 9001 Quality Management System Certifications – Reasons behind the Failure of ISO Certified Organizations. *Anna university of Technology, Coimbatore, Tamil Nadu*.
- [3] Michalska-Ćwiek, J. (2009). *The Quality Management System in Education - Implementation and Certification*. ”, Institute of Engineering Materials and Biomaterials, Silesian University of Technology.
- [4] Poza, A. S. (2009). Implementing a Functional ISO 9001 Quality Management System in Small and

Medium-Sized Enterprises. *Volume (3)*  
(Issue (3))



**universitas  
bandar lampung**

Jl. Z.A. Pagar Alam No.26 Labuhan Ratu  
Bandar Lampung 35142 Phone: +62 721 701463  
[www.ubl.ac.id](http://www.ubl.ac.id)  
Lampung - Indonesia

copyright © 2013