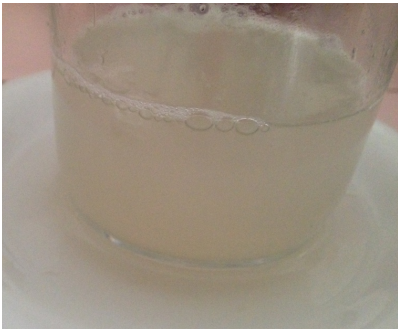


## DOCUMENTATION

### 1. Ambon banana tree sap collection

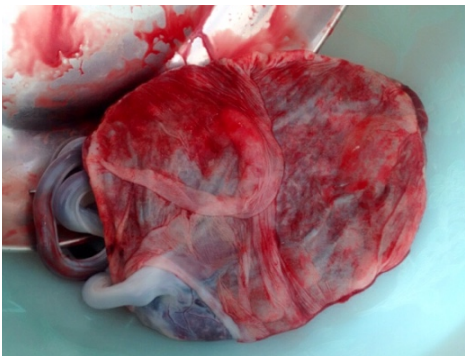


Fresh Ambon banana tree sap

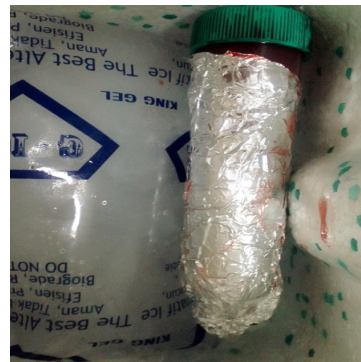


pH Test (7,012)

### 2. Umbilicus collection

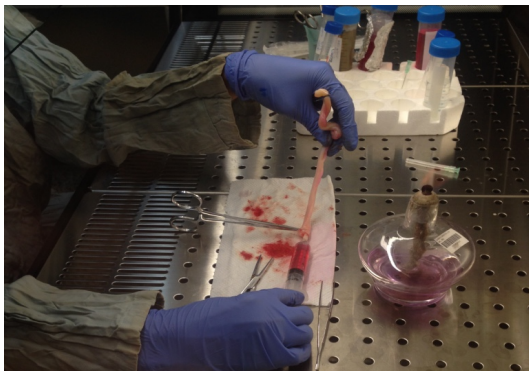


Umbilikus post section



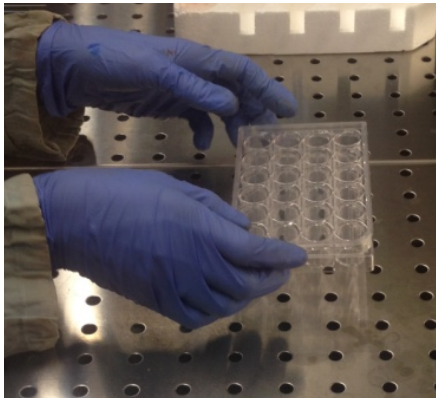
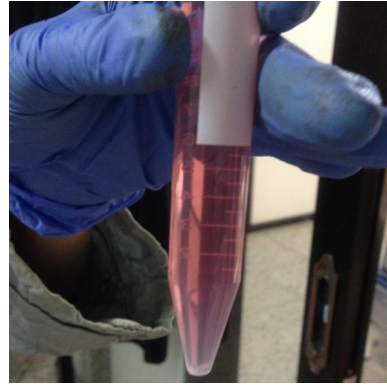
Umbilicus in cord solution

### 3. HUVECs culture

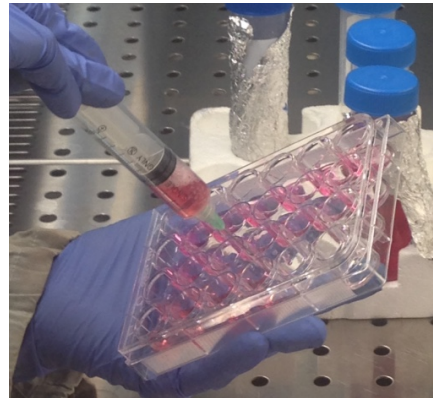




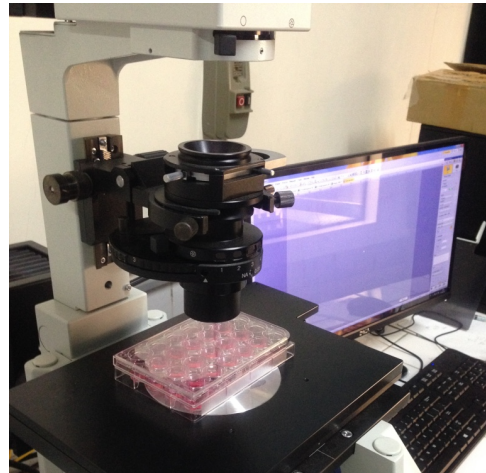
Centrifuge 800rpm for 8 minutes



48 well plate for culture place



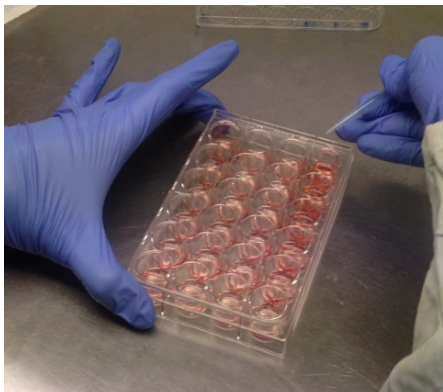
Incubation 3-4 days in 37°C CO<sub>2</sub> 5%



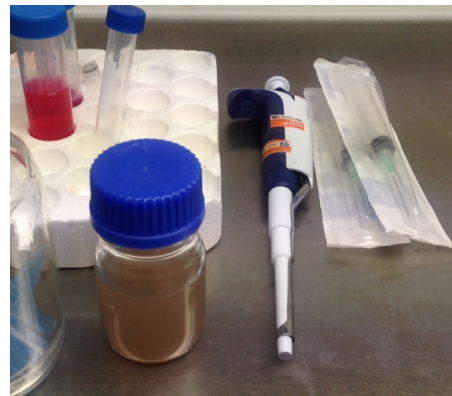
Observation



#### 4. Treatment

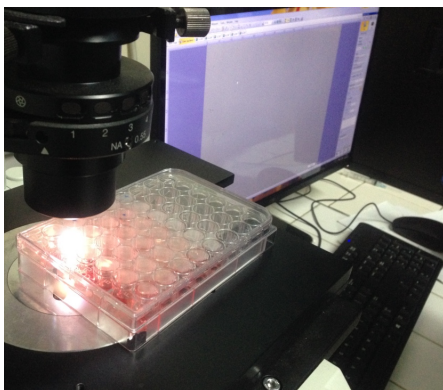


IL-1 200ng/ml+scratch

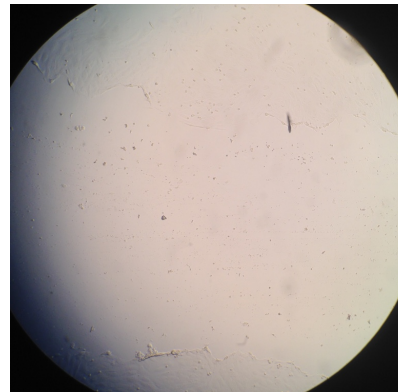


Ambon banana tress sap therapy

#### 5. Measurement



Cell migration measurement with inverted microscope



#### 6. Medium collecting for ELISA-VEGF

