

Microfacies and Sedimentary Environments of the Fahliyan Formation in the Folded Zagros Zone, SW Iran

Mahnaz Parvaneh Nejad Shirazi¹, Mohammad Bahrami², Fatemeh Dashtaby¹, Mohammad Sahraeyan³

¹Department of Geology, Payame -Noor University, PO Box 19395-3697 Tehran, Iran

²Department of Geology, Islamic Azad University, Fars Science and Research Branch, Shiraz, Iran

³Department of Geology, Islamic Azad University, Khorasgan (Esfahan) Branch, Esfahan, Iran

Article Info

Article history:

Received Oct 23, 2012

Revised Jan 13, 2013

Accepted Feb 1, 2013

Keyword:

Fahliyan Formation

Microfacies

Folded Zagros Zone

Rimmed shelf

ABSTRACT

The Fahliyan Formation (Lower Cretaceous) is composed of carbonate rocks and is composed of carbonate reservoir rocks in the Zagros Basin. The Zagros are located on the boundary between the Arabian and Eurasian lithosphere plates and are the orogenic response to a collision between Eurasia and advancing Arabia during the Cenozoic. The study area is located at the northwestern part of Kuh- E- Gadvan, ~45 km northeast of Shiraz in the Folded Zagros Zone. Fahliyan Formation at Kuh- E- Gadvan, with a thickness of 325 meters consisted of thin to thick bedded limestone. The careful examination of thin sections led to the recognition of nine microfacies which was performed on the basis of skeletal and non- skeletal grains and matrix. Microscopic and macroscopic evidences show that Fahliyan Formation facies can be divided into four facies belts, on the basis of depositional features, specific of carbonate platforms of rimmed shelf type. These belts include tidal flat, lagoon, barrier and open marine environments.

Copyright © 2013 Institute of Advanced Engineering and Science.
All rights reserved.

Corresponding Author:

Mohammad Sahraeyan ,
Departement of Geology,
Islamic Azad University, Khorasgan (Esfahan) Branch,
Arghavanieh Blvd, Esfahan, Iran.
Email: m.sahraeyan@yahoo.com

1. INTRODUCTION

The Fahliyan Formation is part of the Lower Cretaceous deposits (Neocomian) of southwest of Iran. This formation is one of the important hydrocarbon reservoirs for Khami group in southwest of Iran. Lithologically, the Fahliyan Formation at the type section consists of 332 meters of mainly limestone and argillaceous limestone [1].

It was deposited on a carbonate platform developed across the Zagros Basin. Little work has been done on the effects of relative sea level changes during deposition of the Cretaceous carbonate sediments in the Zagros Basin. In this research, Fahliyan Formation was investigated in a surface section of Kuh- E- Gadvan in the Folded Zagros Zone. The main objectives of this paper are to (1) describe and interpret the microfacies of deposits of Fahliyan Formation and (2) describe and interpret the depositional environments represented by the Fahliyan Formation.

2. STUDY AREA AND METHODOLOGY

The study area is located at the northeast of Kuh- E- Gadvan, ~45 km northeast of Shiraz in the Folded Zagros Zone. Geographically, the area is part of the Fars Province. Field work was concentrated at the southern flank of Gadvan anticline in the southwestern vicinity of Khuraki village, about 15 km SE of

Dariyan city. A section was measured in detail along the northern and southern slopes of a mountain crossing the northern flank of an anticline at N: 29°37'15"/ E: 52°58'40" (Figure 1).

The thickness of the exposed Fahliyan Formation is 325 meters. Samples were taken almost every three meters and sampling was based on facies variations. More than 125 thin sections were prepared and stained with Alizarin Red S. carbonate rocks were classified following Dunham [2]. Depositional processes were interpreted from the presence of skeletal and non-skeletal components, sedimentary structures, rock textures, and bed continuity [3]-[7]. Fahliyan Formation at Kuh- E- Gadvan, with a thickness of 325 meters, is consisting of thin to thick bedded limestones (Figure 2). The Fahliyan Formation overlies the Surmeh Formation disconformably and is underlain by the Gadvan Formation conformably (Figure 3).

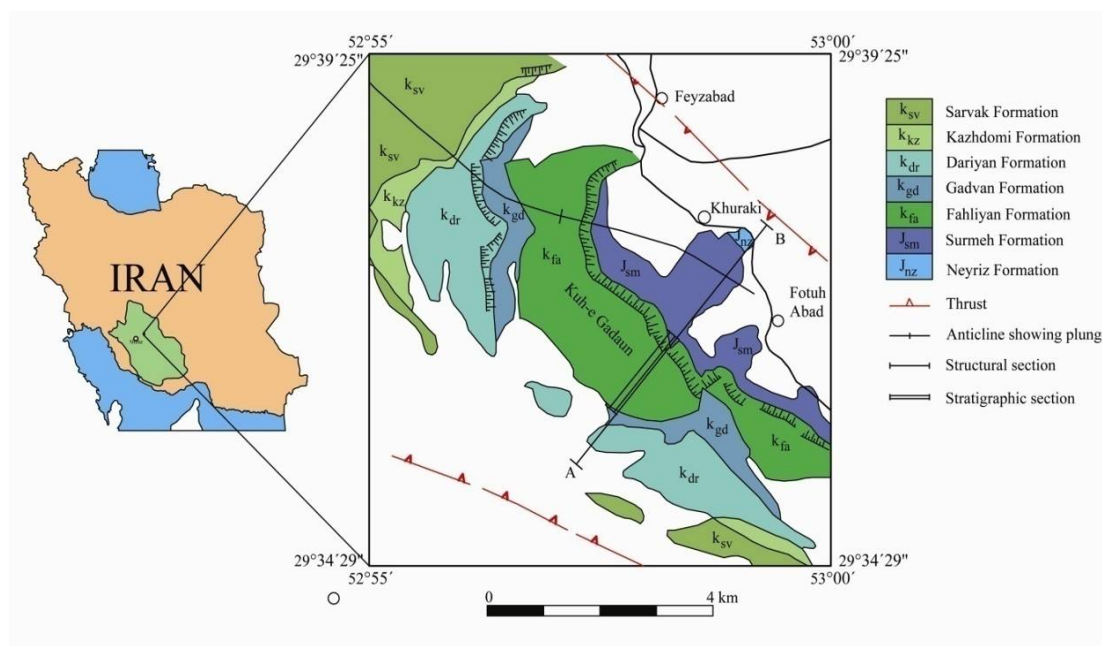


Figure 1. Geological map of study area.

3. MICROFACIES

Fahliyan Formation in the studies section is consisting of the following four facies belts, facing sea from the coast: group T facies (tidal flat), group L facies (lagoon), group B facies (barrier) and group O facies (open marine).

3.1. Dolomitic mudstone (T)

Features such as fenestral fabric, evaporate molds, microbial filaments, mud cracks, and anhydrite nodules in a dolomicrite matrix are observed abundantly in this microfacies (Figure 4). This facies has intensively been influenced by diagenetic processes. Comparing with modern carbonate environments such as Persian Gulf [8], this microfacies has been deposited at upper parts of tidal flats in a warm and arid region.

3.2. Peloidal packstone /grainstone (L1)

The frequency of appearance of peloidal packstone /grainstone is relatively higher in this section and is found at a number of levels. It is commonly composed of peloidal grains, having micritic composition. These microfacies are also found in associations with foraminifera (Figure 5).

This microfacies is interpreted as indicating the presence of a restricted marine shelf lagoon environment similar to Wilson [3] facies belt 8, SMF 16 and Flügel [4]

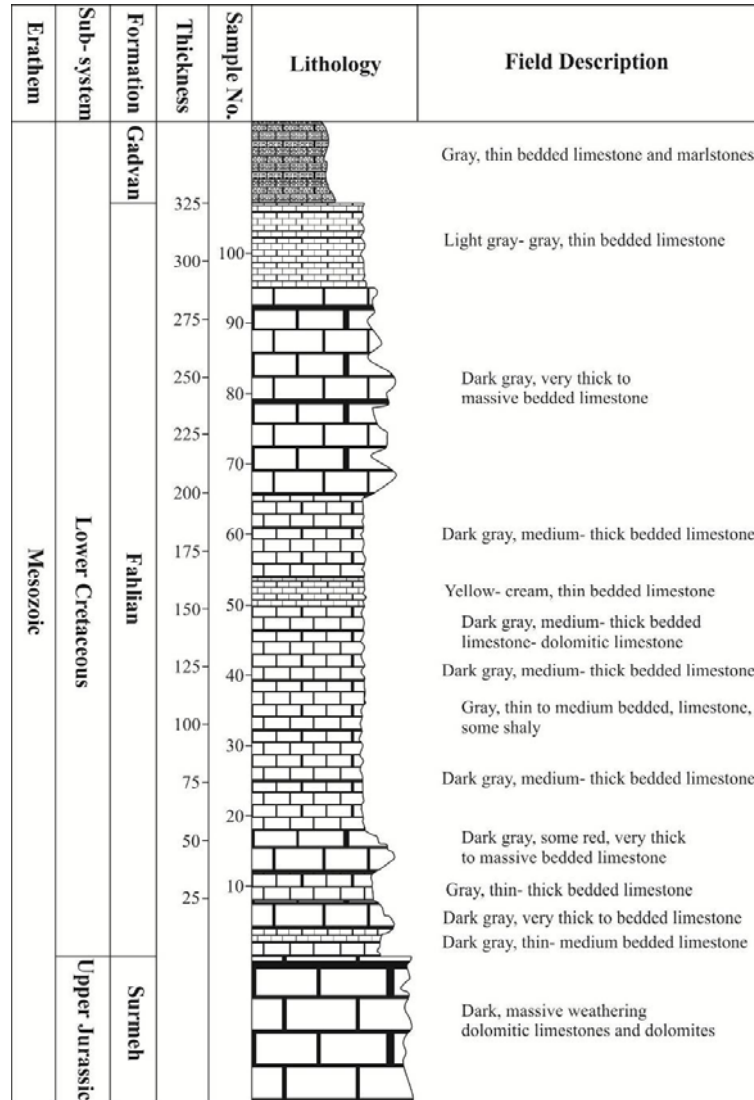


Figure 2. Lithostratigraphic log of Fahliyan Formation in the study area

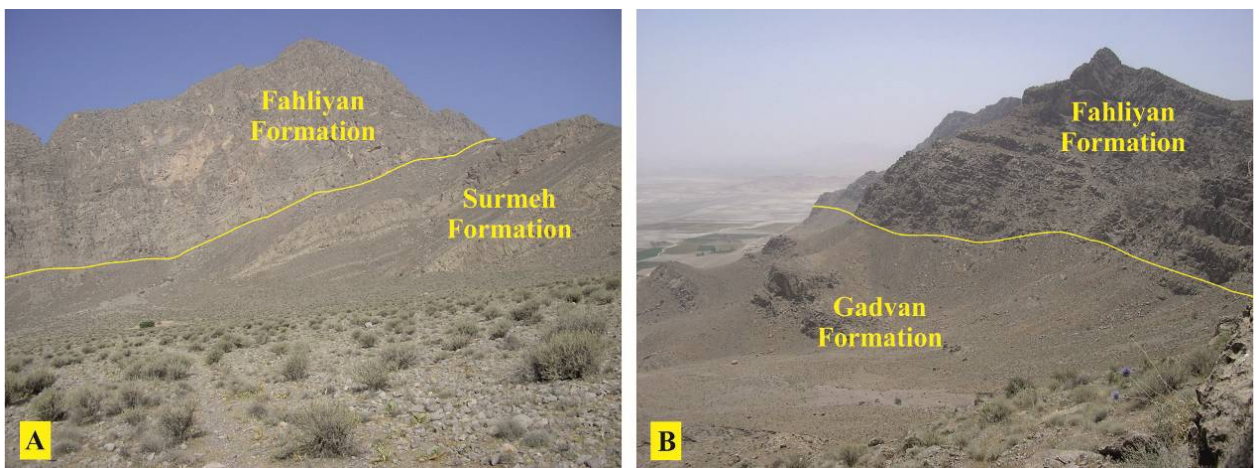


Figure 3. A. A northwest view of Kuh- E- Gadvan (lower boundary of Fahliyan Formation with Surmeh Formation) and B. A southeast view of Kuh- E- Gadvan (upper boundary of Fahliyan Formation with Gadvan Formation).

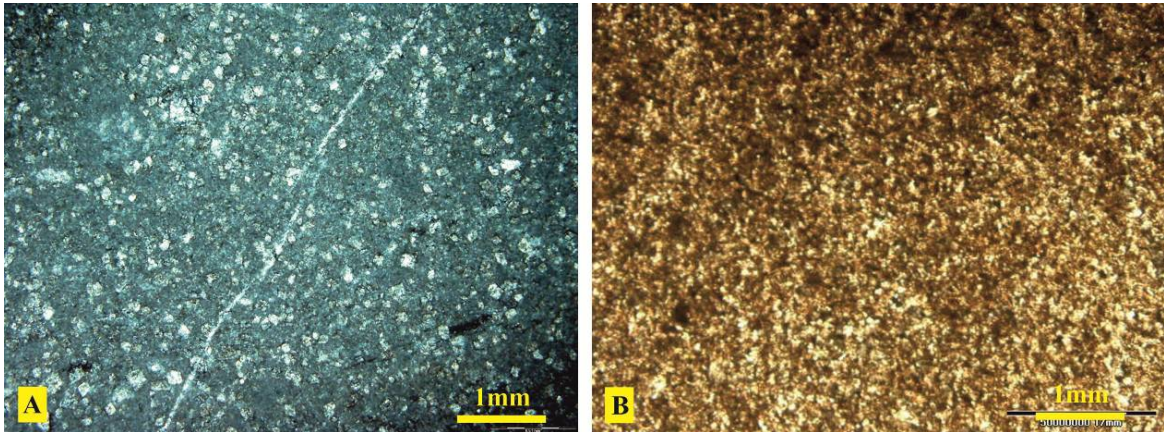


Figure 4. Photomicrographs showing a dolomitic mudstone (T).

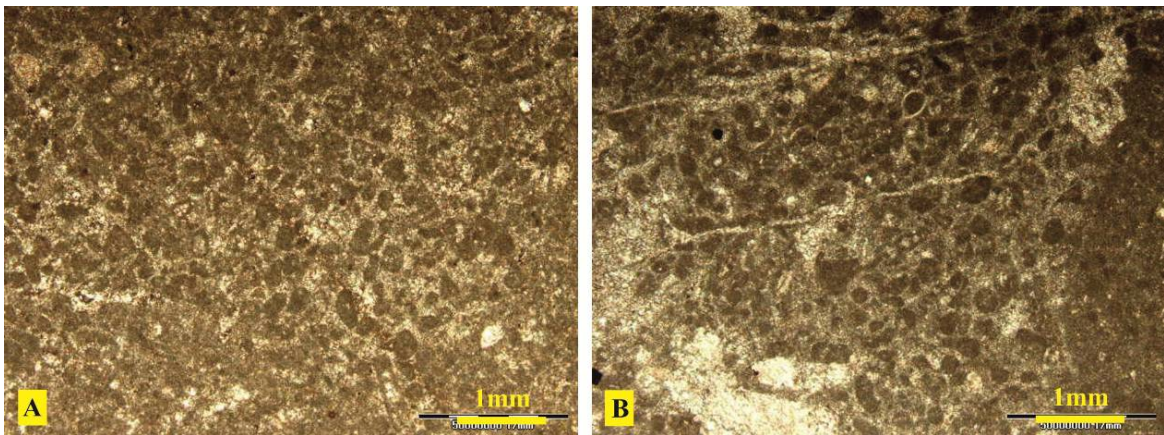


Figure 5. Photomicrographs showing a peloidal packstone / grainstone (L1).

3.3. Algal foraminiferal packstone / wackstone (L2)

This micorfacies can be comparable with SMF 18 [9] and has micrite and microsparite matrix, in addition to very rare planktonic foraminifera, rare small benthic foraminifera, and dacycladacean algae (Figure 6). The bioclasts and coralline algal debris are selective dissolute, opened in some parts and partially cemented in others by fine to medium granular and equigranular mosaic cement. This microfacies represents collaboration in action of near or at storm- wave base of turbidity character in shallow open marine in lagoon environment with moderate circulation.

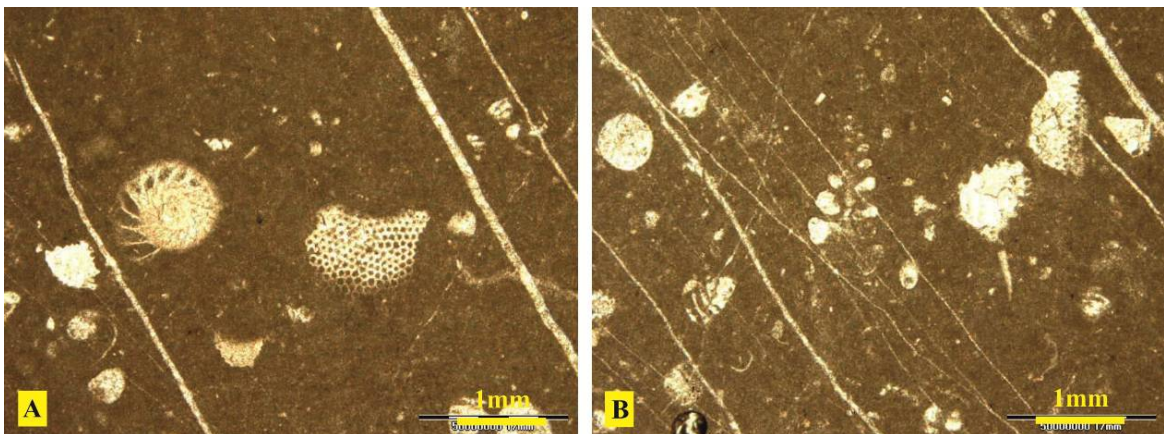


Figure 6. Photomicrographs showing an algal foraminiferal packstone / wackstone (L2).

3.4. Foraminiferal packstone /wackestone (L3)

This facies can be comparable with SMF 10 [9]. The major combination of this facies is high percent of foraminifers and their main structure is wackestone. Their major allochem constituents are orbitolina, pseudocyclamina, echinoderm, and bivalve (Figure 7). The space between allochems are filled by micrite and mud supported fabric has been given. The life environment of foraminifer benthic generally is small limited and stripped from the depth and also in waters with normal salt (35%). Orbitolins which is from foraminifers is seen in reefs. They have important comparable biostratigraphy.

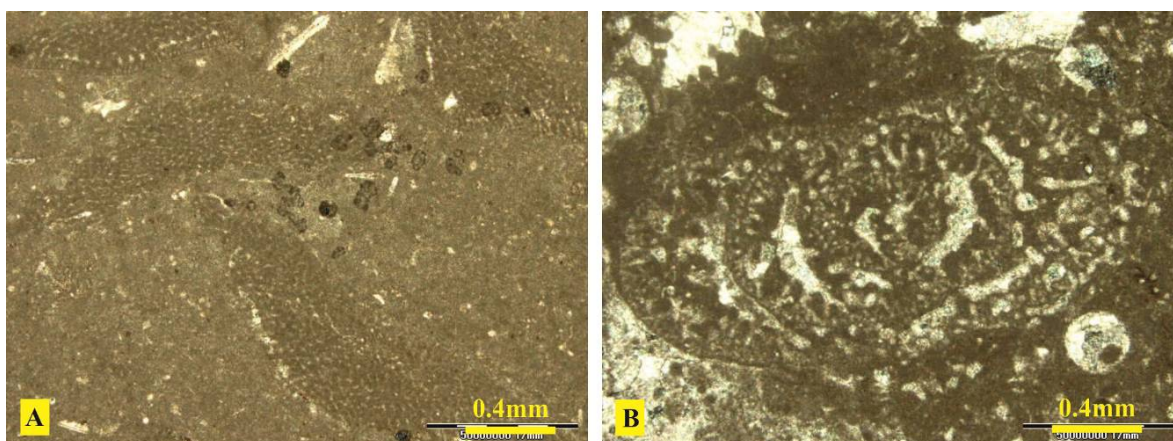


Figure 7. Photomicrographs showing a foraminiferal packstone /wackestone (L3).

3.5. Bioclastic packstone/ wackestone (B1)

This facies is composed mainly of gray to dark grey, with yellow to cream, thin- medium bedded limestone. The macrofossils present as whole shells; echinoids, cephalopods and foraminifers are the most important fossil groups in this facies. Microscopically, this section shows abundant bioclasts of echinoids, dasycladacean algae, and few benthonic foraminifers, embedded in a matrix of micrite. The cement is mostly blocky sparry calcite and constitutes less than 10%. Figure 8 shows the results of microscopic investigations of this microfacies bioclastic packstone /wackestone. This microfacies is similar to SMF 10 of Wilson [3], indicating a lagoon environment. This is supported by the very limited whole fossils, mainly cephalopods and echinoids, which indicate a quiet environment, and the presence of dasycladacean algae and benthonic foraminifera is abundant.

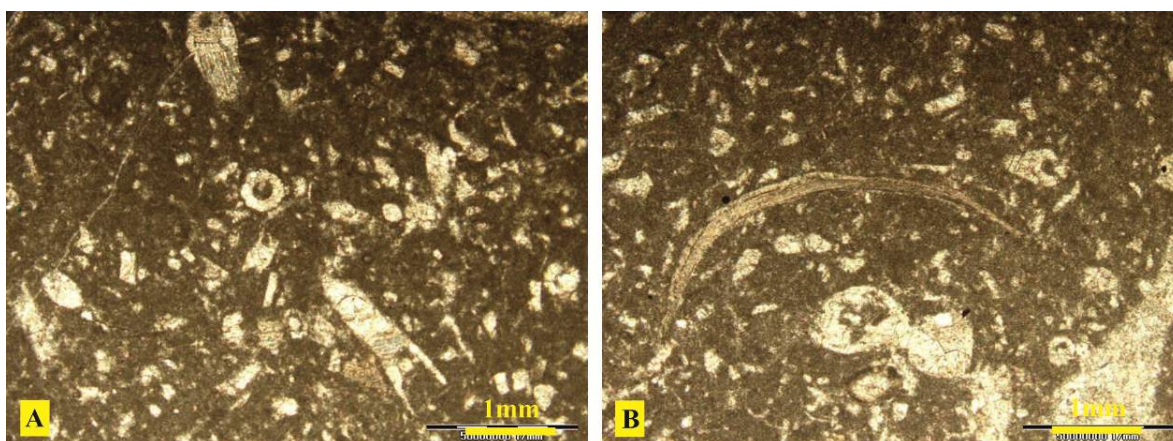


Figure 8. Photomicrographs showing a bioclastic packstone/ wackestone (B1).

3.6. Cortoidal packstone /grainstone (B2)

The cortoids are one of types of coated grains and are covered by micritic envelope only. These grains actually constitute a type of non- laminated coated grains [10]. This microfacies of grainstone has been recorded in (Figure 9). The frequency of their appearance in other microfacies is relatively low. This microfacies is interpreted as indicating the presence of a barrier environment similar to Wilson [3] facies belts 5 or 6, SMF 11 and Flügel [4].

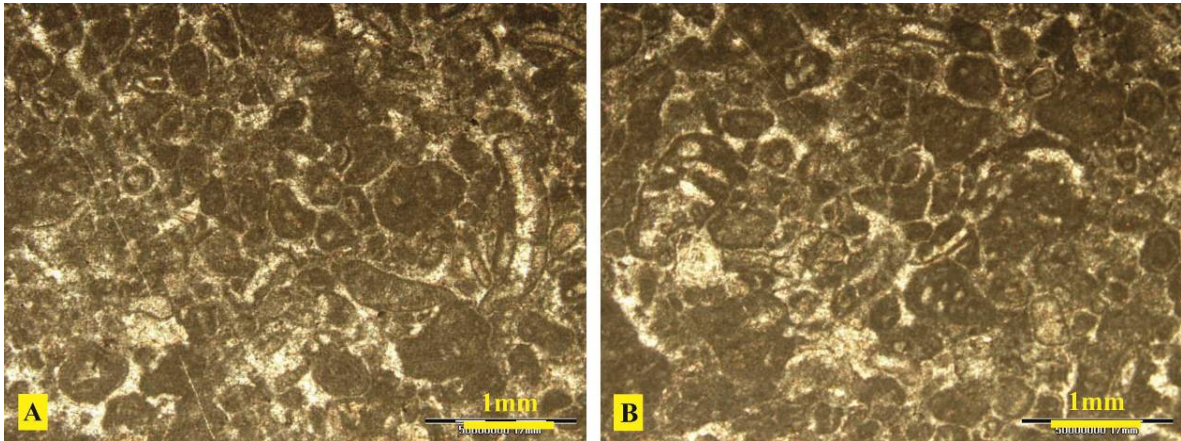


Figure 9. Photomicrographs showing a cortoidal packstone /grainstone (B2).

3.7. Rudist boundstone (B3)

The major allochem of this facies is rudist which includes the whole section and the space between them has been filled with micrite (Figure 10). Rudist is among of reef creatures. Growing beside each other make peace the space between them and as the result, mud forming between them and two separate decks will be connected by mud and make a massive, and give name of boundstone to the stone.

This microfacies is interpreted as indicating the presence of a barrier environment similar to Wilson [3] facies belt 5, SMF 7 and Flügel [4].

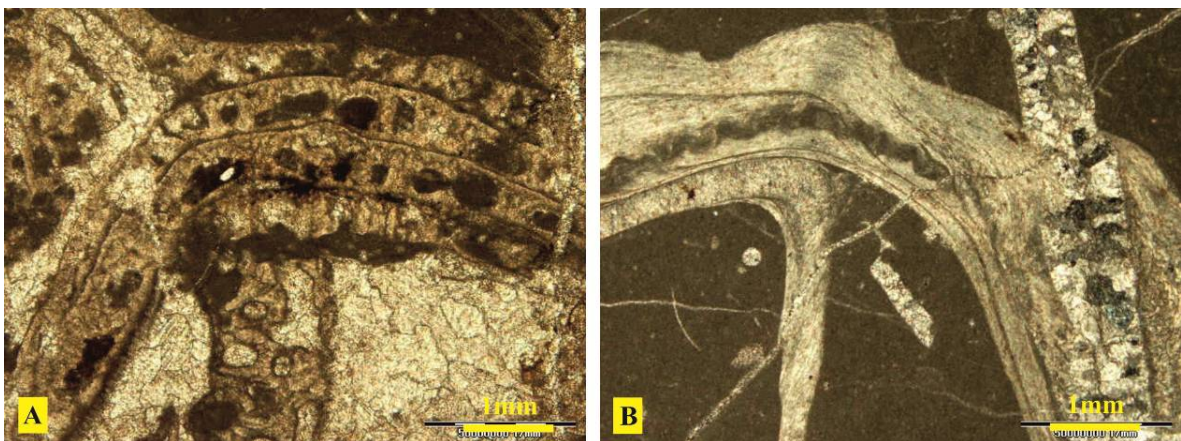


Figure 10. Photomicrographs showing a rudist boundstone (B3).

3.8. Lithocodium aggregatum boundstone (B4)

The major allochem of this facies is lithocodium aggregatum (Figure 11). Lithocodium aggregatum is among of reef creatures. This facies can be comparable with SMF 7. Growing beside each other make peace the space between them and as the result, mud forming between them and two separate decks will be connected by mud and make a massive.

This microfacies is interpreted as indicating the presence of a barrier environment similar to Wilson [3] facies belt 5 and Flügel [4].

3.9. Radiolarian mudstone (O)

The components are composed mostly of radiolarian, spicules and calcified spines of radiolarian, besides planktonic foraminifera. The radiolarian tests were almost fully replaced by calcite, and in some cases they were only partly preserved (Figure 12). Such facies is widespread, in carbonate deposits formed in bathyal environments [9].

Radiolarians are exclusively marine planktonic unicellular organisms consisting of siliceous (opaline) skeletons with sizes less than 2 mm, usually ranging between (100- 250) μm . They populate in open marine environments. In the present- day oceans, and can be found at depths ranging from 100 meters to

more than 4000 meters (Flügel, 2004). Fossil radiolarians were found in basinal pelagic limestones [11], but also in shallower sediments.

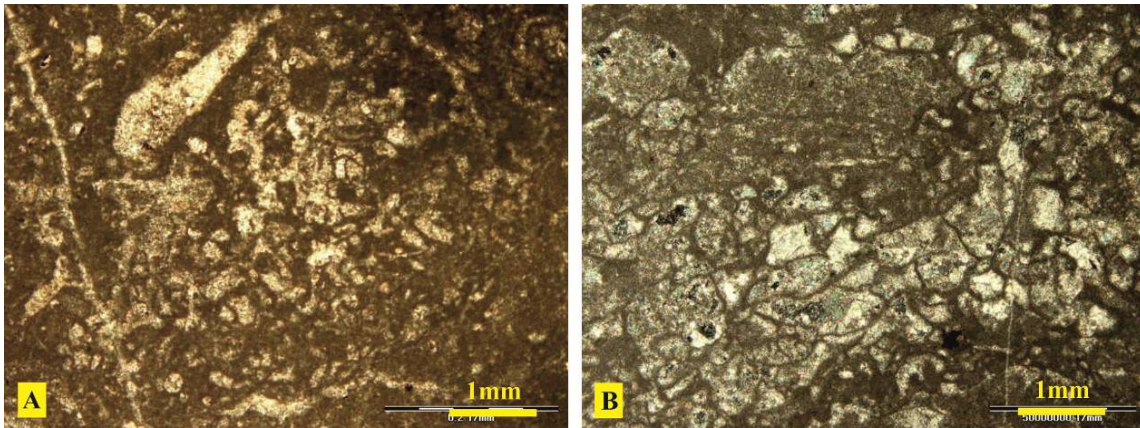


Figure 11. Photomicrographs showing a lithocodium aggregatum boundstone (B4).

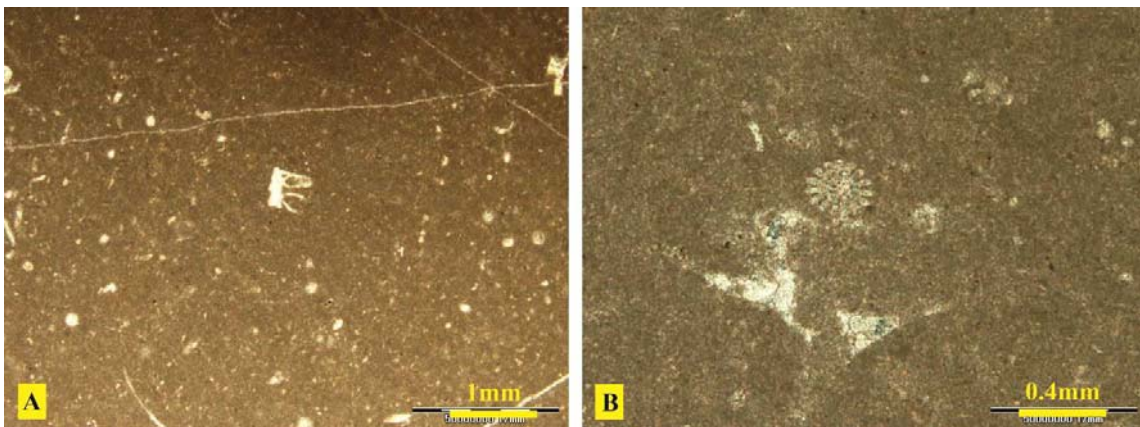


Figure 12. Photomicrographs showing a radiolarian mudstone (O).

4. DEPOSITIONAL ENVIRONMENT

After recognition and detailed study on the microfacies and their classification, regarding Walter rule and the arrangement of overlaying microfacies over each other, their comparison with present and older environment [5], [12], evidences such as lack of dais laced and reworked deposits, absence of slides and slumps facies that indicate high slope of depositional environment during sedimentation, it can be concluded that the microfacies of Fahliyan Formation is involved in shallow depth marine environment. Regarding the studies conducted on the profiles on Fahliyan Formation [13] some evidences have been found on the reworked facies therefore, it is believed that the depositional model of Fahliyan Formation is a carbonate shelf and the profile studied was situated at the shallowest part of the platform (Figure 13).

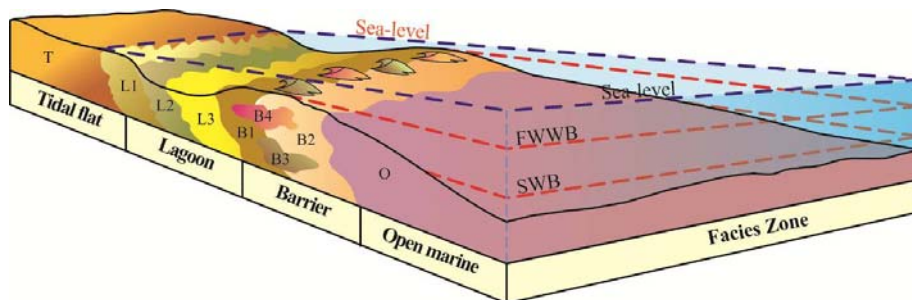


Figure 13. Depositional model of Fahliyan Formation at Kuh- E- Gadvan.

The proposed model includes tidal flat, lagoon, barrier and open marine which are distinguished from each other based on the sedimentary characteristics, difference in energy level, salinity, rate of sedimentation and diversity in the biological assemblage, reconstructed based on facies group continuity.

5. CONCLUSION

The Fahliyan Formation in the studied section is composed of carbonates. The petrographic studies reveal nine types of microfacies which are: dolomitic mudstones, peloidal packstones /grainstones, algal foraminiferal packstones /wackestones, foraminiferal packstones /wackestones, bioclastic packstones /wackestones, cortoidal packstones /grainstones, rudist boundstones, lithocodium aggregatum boundstones, and radiolarian mudstones. The analytical studies of these microfacies lead towards the inference that the Fahliyan Formation deposited in the carbonate shelf and the profile studied was situated at the shallowest part of the platform. The allochemical component grains are predominantly bioclastic, tests and particles, which mostly belongs to benthonic foraminifers. Other skeletal grains show a diversity of species, which include echinoderms, sponges, rudists, and algae.

ACKNOWLEDGEMENTS

The Authors appreciate Payam-e-Noor University of Shiraz for providing the laboratory facility.

REFERENCES

- [1] GA. James and JG. Wynd. "Stratigraphic nomenclature of Iranian oil consortium agreement area", *AAPG Bulletin*, Vol/Issue: 49(12). Pp. 2182-2245, 1965.
- [2] RJ. Dunham. "Classification of carbonate rocks according to depositional texture", *AAPG Memoir*, Vol. 1. Pp. 108-121, 1962.
- [3] JL. Wilson. "*Carbonate Facies in Geological History*", Springer-Verlag, Berlin, 1975.
- [4] E. Flügel. "*Microfacies Analysis of Limestones*", Springer-Verlag, Berlin, 1982.
- [5] AV. Carozzi. "*Carbonate Rocks Depositional Model*", Prentice Hall, New Jersey, 1989.
- [6] G. Einsele. "*Sedimentary Basins; Evolution, Facies and Sediment Budget*", Springer-Verlag, 2000.
- [7] ME. Tucker. "*Sedimentary Petrology*", 3rd Edition, Blackwell, Oxford, 2001.
- [8] G. Friedman. "The arid peritidal complex of Abudhabi: A historical perspective", *Carbonates and Evaporites*, Vol. 10. Pp. 2-7, 1995.
- [9] E. Flügel. "*Microfacies of Carbonat Rocks Analysis, Interpretation and Application*", Springer-Verlag, Berlin, 2004.
- [10] ME. Tucker and VP. Wright. "*Carbonate Sedimentology*", Blackwell Scientific Publication, Oxford, London, 1990.
- [11] B. Kuhry, et al. "Indications of current actions in Late Jurassic limestones, Radiolarian Limestones, Saccocoma Limestones and associated rocks from the Subbetic SE Spain", *Sedimentary Geology*, Vol. 15. Pp. 235-258, 1976.
- [12] GJ. Nichols. "*Sedimentology and Stratigraphy*", Oxford, United Kingdom, Blackwell Science, 1999.
- [13] Y. Lasemi and Kh. Nourafkan. "Sequence stratigraphic control on prolific HC reservoir development, southwest Iran", *Oil and Gas Journal*, Vol. 106. Pp. 1-6, 2008.