



Research Article

Effects of Calcination Temperatures on The Catalytic Activities of Alumina Supported Cobalt and Chromium Catalysts

Mardwita Mardwita^{1*}, Eka Sri Yusmartini¹, Nidya Wisudawati²

¹Chemical Engineering Department, Faculty of Engineering, Universitas Muhammadiyah Palembang, Jl. Jend. Ahmad Yani 13 Ulu, Palembang 30263, Indonesia

²Industrial Engineering Department, Faculty of Engineering, Universitas Muhammadiyah Palembang, Jl. Jend. Ahmad Yani 13 Ulu, Palembang 30263, Indonesia

Received: 11th April 2019; Revised: 9th August 2019; Accepted: 18th August 2019;
Available online: 30th September 2019; Published regularly: December 2019

Abstract

Catalysts properties are important for catalytic reactions. The interaction between support and metal in a catalyst is resulted from catalyst preparation. In this study, gamma-alumina (Al_2O_3) supported cobalt (Co) and chromium (Cr) catalysts were prepared by impregnation method and calcined at two different temperatures, they are 400 °C for 4 hours and 800 °C for 4 hours. The resulted catalysts contained 10 wt.% of metal and denoted as $\text{Co}/\text{Al}_2\text{O}_3(400)$, $\text{Co}/\text{Al}_2\text{O}_3(800)$, $\text{Cr}/\text{Al}_2\text{O}_3(400)$, and $\text{Cr}/\text{Al}_2\text{O}_3(800)$ catalysts. The surface and state of the catalysts were examined by using x-ray diffraction (XRD), x-ray photoelectron spectrometer (XPS) and transmission electron microscopy (TEM). The XRD result reveals that strong interaction between Co and Al_2O_3 due to a formation of higher cobalt oxide. The XRD result further indicates aggregation and strong support metal interaction between Co and Al_2O_3 during calcination. On the other hand, TEM result showed that large Co particle was observed on Al_2O_3 . The $\text{Cr}/\text{Al}_2\text{O}_3$ catalysts were characterized by using XPS. The XPS results showed that $\text{Cr}/\text{Al}_2\text{O}_3(800)$ catalyst was dominated by Cr^{6+} species at binding energy 579.04 eV, indicating high dispersion of Cr on Al_2O_3 . Moreover, Cr metal particle was not observed on XRD and TEM image. All the characterization results provide information that the impregnated metal on Al_2O_3 showed different properties. Co metal particle tends to be more oxidized and formed large particle, however it was not observed on Cr metal particle. Copyright © 2019 BCREC Group. All rights reserved

Keywords: Impregnation; Cobalt Catalyst; Chromium Catalyst; Methane Oxidation

How to Cite: Mardwita, M., Yusmartini, E.S., Wisudawati, N. (2019). Effects of Calcination Temperatures on The Catalytic Activities of Alumina Supported Cobalt and Chromium Catalysts. *Bulletin of Chemical Reaction Engineering & Catalysis*, 14(3): 654-659 (doi:10.9767/bcrec.14.3.4673.654-659)

Permalink/DOI: <https://doi.org/10.9767/bcrec.14.3.4673.654-659>

1. Introduction

Heterogeneous catalyst plays an important role in catalytic reaction of chemical industries.

A catalyst contains two or more important compositions; they are a metal, a promoter, and a support. The metal is usually dispersed on a support to obtain a high surface area of an active metal. The catalytic property of the metal mainly depends on the interaction between metal and support. Therefore, metal-support interaction is important for the final catalysts properties. Some supports such as alumina (Al_2O_3),

* Corresponding Author.

E-mail: wiwitdiita@gmail.com;

mardwita@um-palembang.ac.id (M. Mardwita);

Telp.: +62-812-78201685, Fax: +62-711-519408

silica (SiO_2) and titania (TiO_2) have been reported to exhibit strong metal-support interaction and low reducibility of metal [1-2]. As a consequence of these, the catalytic activity of the catalysts must be low. Catalysts treatment such as reduction and calcination temperatures somehow indirectly affected the catalysts properties through their metal-support interactions, crystallite sizes and oxidation states of the metals [3-5].

Among the various support, alumina is widely used and attracted much attention as catalyst support due to its high surface area, thermal resistance and stability at high temperature [6]. Alumina with transition metal such as cobalt (Co) and chromium (Cr) is widely applied to different industrially reactions, including methane oxidation and carbon monoxide hydrogenation [7-9]. In a high temperature catalytic reaction, a strong metal-support interaction may leads to the formation of a large metal particle. It is a known fact that the presence of a large metal particle on a support surface may serve as an inactive phase [10], therefore, it is necessary to make the metal particle as small as possible that leads to the high dispersion of active phase. Khangale *et al.* [11] studied the effect of activation with carbon monoxide (CO) for $\text{Co}/\gamma\text{-Al}_2\text{O}_3$ catalyst, they found that CO can activates $\text{Co}/\gamma\text{-Al}_2\text{O}_3$ catalyst at low temperature and improves catalyst reduction which is produced a higher number of active sites in the catalyst, hence increased the catalytic activity. Goodman [12] studied the catalytically active Au on TiO_2 , he found that strong metal-support interaction leads to the suppression of hydrogen (H_2) and carbon monoxide (CO) chemisorptions for various metal and for active Au/TiO_2 catalyst CO chemisorptions is enhanced due to electron transfer from TiO_2 to Au. Catalytic properties of alumina supported ruthenium (Ru), platinum (Pt), and cobalt (Co) nanoparticles was also investigated by Rekkab-Hammoumraoui and Choukchou-Braham [13], they concluded that the support, the noble and the non-noble metals can be active for oxidation of cyclohexane and they found that Ru and Pt are in metallic form whereas Co is in the oxides form.

Based on the view of the above reasons, the purpose of this study is to investigate the effect of calcination temperatures on the characterization and catalytic activity of alumina supported cobalt and chromium catalysts. The prepared catalysts were characterized by using x-ray diffraction (XRD), x-ray photoelectron spectroscopy (XPS) and transmission electron microscopy (TEM) apparatus. The catalytic activi-

ty of the catalysts was tested in methane oxidation reaction.

2. Materials and Methods

2.1. Catalyst Preparation

The catalysts preparation is described as follows. Four series of alumina supported cobalt and chromium catalysts were prepared by impregnation method. Gamma-alumina ($\gamma\text{-Al}_2\text{O}_3$) was used as support. Two series of alumina supported cobalt ($\text{Co}/\text{Al}_2\text{O}_3$) catalysts were prepared using required amount of cobalt nitrate ($\text{Co}(\text{NO}_3)_2 \cdot 6\text{H}_2\text{O}$, Merck) which was dissolved in aquadest and impregnated into Al_2O_3 powder. The solution was stirred and dried-up on a hot plate at 80°C in order to remove the water. The resulted solid was kept in an oven at 80°C for 12 h. The loading of the Co was 10 wt.%. To observe the effect of calcination temperatures, the solid was calcined in mixture of argon (Ar) and oxygen (O_2) at two different temperatures, 400°C and 800°C , for 4 h. The final catalysts were denoted as $\text{Co}/\text{Al}_2\text{O}_3(400)$ and $\text{Co}/\text{Al}_2\text{O}_3(800)$ catalysts. The same procedure of preparation and calcination as described above was also used to prepare alumina supported chromium ($\text{Cr}/\text{Al}_2\text{O}_3$) catalyst, where $\text{Cr}(\text{NO}_3)_3 \cdot 9\text{H}_2\text{O}$ (Merck) was used as the source of Cr metal. The final catalysts were denoted as $\text{Cr}/\text{Al}_2\text{O}_3(400)$ and $\text{Cr}/\text{Al}_2\text{O}_3(800)$ catalysts.

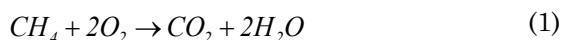
2.2 Catalyst Characterization

The XRD patterns have been recorded on Rigaku RINT-2500KS instrument by using $\text{Cu K}\alpha$ radiation source ($\lambda = 1.54439 \text{ \AA}$) and scintillation counter detector at room temperature. The JCPDS data files were used to identify the XRD phases in the catalysts. The XPS measurements were made on Shimadzu PHI-5800 spectrometer using $\text{Al K}\alpha$ ($h = 1486.0 \text{ eV}$) radiation as the excitation source. Before the measurements, the samples were kept in a vacuum overnight. The XPS analysis was done at room temperature and at pressure 1×10^{-8} Pa. The binding energies measured with accuracy of $\pm 0.1 \text{ eV}$ and uses C 1s at 284.5 eV as standard. The TEM were conducted with a JEM-200CX (200 kV) apparatus. The catalysts were kept in a vacuum overnight before the measurements.

2.3 Catalyst Test

The catalytic activities of $\text{Co}/\text{Al}_2\text{O}_3(800)$ and $\text{Cr}/\text{Al}_2\text{O}_3(800)$ catalysts were tested on methane oxidation reaction. The reactant gases consisted of methane (CH_4), oxygen (O_2) and

argon (Ar) with total flow rate closed to 26 ml/min. The reaction temperature ranged from 300 °C to 480 °C. A micro-reactor contained 0.25 grams catalyst was externally heated by a furnace. The products were detected using a thermal conductivity detector (TCD). Analysis of the products gases hardly detected any formation of carbon monoxide. The products of this reaction were carbon dioxide and water. The overall methane oxidation reaction is represented by Equation (1).



The methane conversion was calculated from the peak areas obtained from the gas chromatograms. The methane conversion is defined by Equation (2).

$$X_{CH_4} = \frac{(\text{amount of } CH_4 \text{ in} - \text{amount of } CH_4 \text{ out})}{(\text{amount of } CH_4 \text{ in})} \quad (2)$$

The concentration of each component is defined by Equation (3).

$$\text{Concentration} = \frac{\text{Area} \times \text{Response factor} \times \text{amount of component}}{\text{Total Area}} \quad (3)$$

3. Results and Discussion

The XRD measurements were recorded for Co/Al₂O₃ catalysts subjected to calcination at 400 °C and 800 °C. The 2θ data was collected by using a continuous scan mode ranged from 10° to 70°. Figure 1 shows the XRD patterns of Co/Al₂O₃(400) and Co/Al₂O₃(800) catalysts. As can be seen in Figure 1, the XRD patterns con-

firmed the existence of Al₂O₃, CoAl₂O₄, CoO, and Co₃O₄ phase. The XRD pattern for Co/Al₂O₃(800) catalyst is a little bit shifted to the right, this could be due to different phases on alumina and the transition of the phases as the calcination temperature increases. Based on the literature, on Co/Al₂O₃ catalyst, the peaks of Al₂O₃ are at values of 46.1° and 66.5°, while the peaks relate to Co metal should appeared at 2θ values of 43.8°, 51.5° and 75.6°, and the other cobalt oxides crystal planes are appeared at 2θ values of 36.5°, 42.5° and 60° [14-15]. The chemical structure and structural phases for Co₃O₄ and CoAl₂O₄ are difficult to identify on both catalysts because Co₃O₄ and CoAl₂O₄ phase has almost identical diffraction peak position [16]. No peaks for Co metal were detected in XRD patterns, it might be due to the overlap with diffraction peaks of Al₂O₃ [15]. On the other hand, the diffraction peak at 61.8° in both catalysts was due to CoO phase.

The main difference between the XRD patterns for both catalysts is the formation of CoO phase which is clearly detected in Co/Al₂O₃(800) catalyst at 2θ value of 42.7°. This result indicates the existence of Co₃O₄ phase in the surface of Co/Al₂O₃(400) catalyst, however the peak was not observed on the catalyst surface. Further calcination at high temperature increases the metal-support interaction and leads to the formation of CoO phase. It seems that CoO phase is formed during the calcination at high temperature (> 400 °C). In Co/Al₂O₃ catalyst system, Co₃O₄ phase is a thermodynamically stable under the ambient

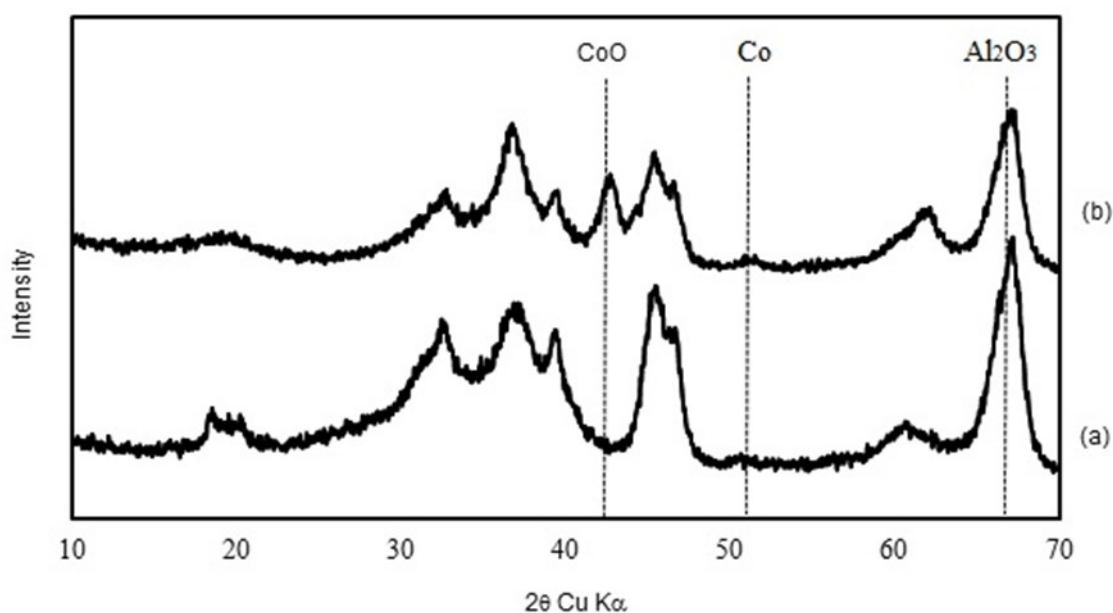
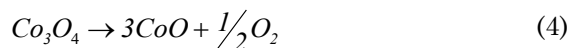


Figure 1. XRD patterns for (a) Co/Al₂O₃(400) and (b) Co/Al₂O₃(800) catalyst

temperature and the formation of CoO phase can be expressed as follows [16].



Our results agreed well with Ji *et al.* [16], they found that when metal-support interaction is small, the catalyst is dominated by Co_3O_4 phase, on the other hand, CoO and CoAl_2O_4 phases are predominant on the catalyst surface when metal-support interaction increase.

The XPS measurements were only done for $\text{Cr}/\text{Al}_2\text{O}_3(400)$ and $\text{Cr}/\text{Al}_2\text{O}_3(800)$ catalysts, since a significant fraction of Cr is present as a small Cr_2O_3 particle that is detected by the XPS but is not by the XRD. Figure 2 displays XPS spectra for $\text{Cr}/\text{Al}_2\text{O}_3$ catalysts. The XPS was conducted on curve-fitting area of Cr in range of 550 – 595 eV. The Cr 2p3/2 XPS peaks at binding energy values of 577.2 eV and 579.8 eV are assigned to Cr^{3+} and Cr^{6+} species, respectively, as given by Rahman *et al.* [17]. The $\text{Cr}/\text{Al}_2\text{O}_3(400)$ and $\text{Cr}/\text{Al}_2\text{O}_3(800)$ catalysts were found to behave differently in calcination at 400 °C and 800 °C treatments. The XPS results

showed that the $\text{Cr}/\text{Al}_2\text{O}_3(400)$ catalyst has a predominantly Cr^{3+} species on the surface of support, whereas Cr^{6+} species was not observed a characterized by the Cr 2p3/2 signals at 577.0 eV and 580.0 eV, respectively. It might be due to very small formation of CrO_3 species. However, an interesting change was observed in the surface composition of the states of Cr after calcination at 800 °C for 4 h. The differences in calcination temperatures between these catalysts seem affect to the general oxidation states behaviour. Two broad peaks were visible at binding energies 576.8 eV and 579.04 eV which is assigned to the Cr^{3+} and Cr^{6+} species, respectively. The formation of Cr^{6+} species on $\text{Cr}/\text{Al}_2\text{O}_3(800)$ catalyst could be due to a thermally activated process, since it was not found on 400 °C calcined catalyst. The hydroxyl groups and the structure of alumina might affect the formation of Cr^{6+} species. The calcination treatment at high temperature caused significant amount of Cr^{6+} species which suggest to better Cr dispersion [18]. However, these binding energies are shifted and lower compared to the binding energies obtained for

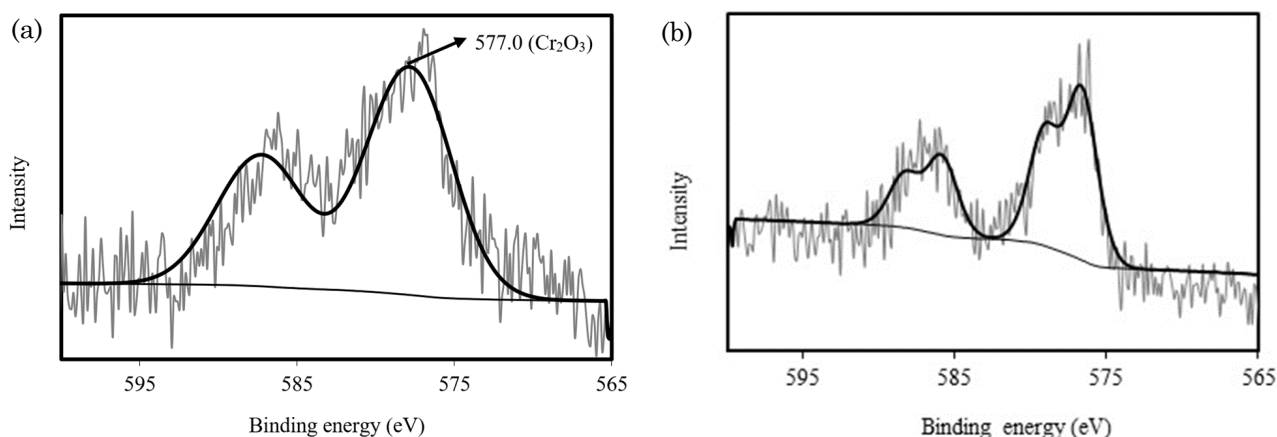


Figure 2. XPS spectra Cr 2p3/2 core level for a) $\text{Cr}/\text{Al}_2\text{O}_3(400)$ and b) $\text{Cr}/\text{Al}_2\text{O}_3(800)$ catalyst

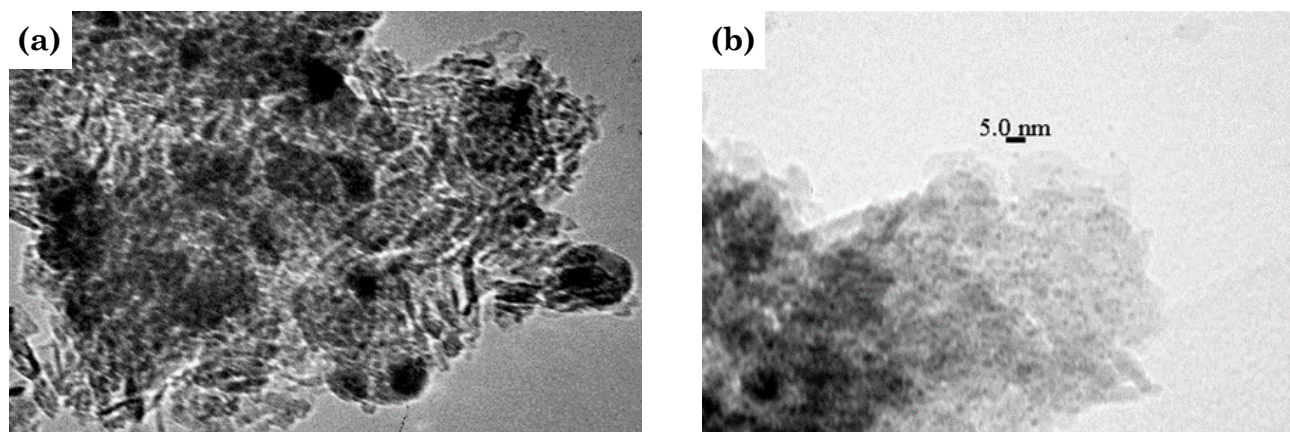


Figure 3. TEM images for (a) $\text{Co}/\text{Al}_2\text{O}_3(800)$ and (b) $\text{Cr}/\text{Al}_2\text{O}_3(800)$ catalyst

Cr/Al₂O₃(400) catalyst as shown in Figure 2. The TEM images of Co/Al₂O₃(800) and Cr/Al₂O₃(800) catalysts are shown in Figure 3. TEM image of Co/Al₂O₃(800) catalyst showed large particles, it might due to agglomeration of Co particles during the calcination treatment, whereas TEM image of Cr/Al₂O₃(800) catalyst showed a very small black dot particles that might assigned to the highly dispersed Cr particles.

Figure 4 shows the comparison of Co/Al₂O₃(800) and Cr/Al₂O₃(800) catalysts over methane oxidation reaction. Both catalysts were active for methane oxidation and the catalysts started their catalytic activities at temperature higher than 250 °C. The results showed that the catalytic activities for both catalysts increase with the increasing of temperatures. However, the catalytic activity of Cr/Al₂O₃(800) is relatively higher than Co/Al₂O₃(800) catalyst. It has been well-known that Cr⁶⁺ species is active for methane oxidation reaction as reported by Park and Ledford [19]. They studied Cr/Al₂O₃ catalysts with different Cr loading and tested the catalytic activities over methane oxidation and found that the rich Cr⁶⁺ species catalyst gave the highest activity. Kuznetsova *et al.* [20] also studied the Cr catalysts for hydrocarbons destruction. They found that during the calcination treatments, the surface of alumina changes remarkably. The hydroxyl groups on the surface of alumina are responsible for the adsorptions of Cr from aqueous solution. High calcination temperatures may remove the hydroxyl groups on alumina hence increase the possibility for Cr adsorption onto alumina and increase the thermal stability of Cr⁶⁺ species. Therefore, at high calcination temperature, Cr⁶⁺ species is dominant species due to its thermal stability and active towards the reactions of hydrocarbons oxidation.

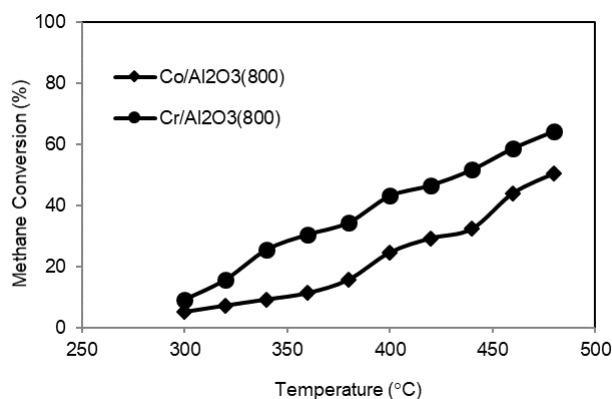


Figure 4. Methane conversion as a function of reaction temperature over Co/Al₂O₃(800) and Cr/Al₂O₃(800) catalyst

4. Conclusions

A series of alumina supported cobalt and chromium catalysts were prepared and calcined at different calcination temperatures (400 °C and 800 °C). The XRD results showed that Co/Al₂O₃(800) catalyst was aggregated during calcination treatment and resulted CoO phase on the catalyst surface. The presence of CoO phase indicates higher metal-support interaction. On the other hand, XPS result for Cr/Al₂O₃(800) catalyst showed the Cr⁶⁺ species is dominant on the catalyst surface. High calcination temperature may remove the hydroxyl groups on alumina, Co particle may form an aggregation on alumina, and however Cr particle may adsorb and dispersed onto alumina. Both catalyst were active for methane oxidation and Cr/Al₂O₃(800) catalyst showed the higher activity than Co/Al₂O₃(800) catalyst due to the presence of Cr⁶⁺ species.

Acknowledgment

This research is funded by the grant from Directorate of Research and Community Service Directorate General of Research and Development (DRPM) The Ministry of Research Technology and Higher Education (RISTEKDIKTI) through the “*Skim Hibah Desentralisasi: Penelitian Dasar Unggulan Perguruan Tinggi*” Program, research contract number: SP DIPA-042.06.1.401516/2018.

References

- [1] Ali, S., Mohd Zabidi, N.A., Al-Marri, M.J., Khader, M.M. (2016). Effect of the Support on Physicochemical Properties and Catalytic Performance of Cobalt Based Nanocatalysts in Fischer-Tropsch Reaction. *Materials Today Communications*, 10: 67-71.
- [2] Ozawa, M., Yoshitoyo, N. (2016). Thermal Stability and Microstructure of Catalytic Alumina Composite Support with Lanthanum Species. *Applied Surface Science*, 380: 288-293.
- [3] Okumura, K., Niwa, M. (2002). Metal-Support Interaction which Controls the Oxidation State, Structure and Catalysis of Pd. *Catalysis Surveys from Japan*, 5: 121-126.
- [4] Dey, S., Dhal, G.C., Mohan, D., Prasad, R. (2017). Effect of Preparation Conditions on the Catalytic Activity of CuMnOx Catalysts for CO Oxidation. *Bulletin of Chemical Reaction Engineering & Catalysis*, 12(3): 431-451.
- [5] Singha, R.K., Shukla, A., Yadav, A., Konathala, L.N.S., Bal, R. (2017). Effect of Metal-Support Interaction on Activity and Stability of Ni-CeO₂ Catalyst for Partial Oxidation of

- Methane. *Applied Catalysis B: Environmental*, 202: 473-488.
- [6] Valdes-Martinez, O.U., Suarez-Toriello, V.A., De Los Reyes, J.A., Pawelec, B., Fierro, L.G. (2017). Support Effect and Metals Interactions for NiRu/Al₂O₃, TiO₂ and ZrO₂ Catalysts in the Hydrodeoxygenation of Phenol. *Catalysis Today*, 296: 219-227.
- [7] Mardwita, M., Matsune, H., Takenaka, S., Kishida, M. (2012). Chromium Addition to Alumina-Supported Platinum Catalysts and Effect on Catalytic in Methane Combustion. *Journal of Chemical Engineering of Japan*, 45: 493- 497.
- [8] Mardwita, M., Bustan, M.D. (2017). Ammonium Hydroxide Addition and Its Influence on the Catalytic Activities of Pt-Based Catalysts for Methane Oxidation. *MATEC Web of Conferences*, 101: 1-6.
- [9] Tijani, M.M., Aqsha, A., Mahinpey, N. (2017). Synthesis and Study of Metal-Based Oxygen Carriers (Cu, Co, Fe, Ni) and Their Interaction with Supported Metal Oxides (Al₂O₃, CeO₂, TiO₂, ZrO₂) in A Chemical Looping Combustion System. *Energy*, 138: 873-882.
- [10] Murata, K., Mahara, Y., Ohyama, J., Yamamoto, Y., Arai, S., Satsuma, A. (2017). Metal-Support Interaction Concerning Particle Size Effect of Pd/Al₂O₃ on Methane Combustion. *Angewandte Chemie International Edition*, 50: 15993-15997.
- [11] Khangale, P.R., Meijboom, R., Jalama, K. (2019). Fischer-Tropsch Synthesis over Unpromoted Co/γ-Al₂O₃ Catalyst: Effect of Activation with CO Compared to H₂ on Catalyst Performance. *Bulletin of Chemical Reaction Engineering & Catalysis*, 14(1): 35-41.
- [12] Goodman, D.W. (2005). Catalytically Active Au on Titania: Yet Another Example of A Strong Metal Support Interaction (SMSI)?. *Catalysis Letter*, 99: 1-4.
- [13] Rekkab-Hammoumraoui, I., Choukchou-Braham, A. (2018). Catalytic Properties of Alumina-Supported Ruthenium, Platinum, and Cobalt Nanoparticles towards the Oxidation of Cyclohexane to Cyclohexanol and Cyclohexanone. *Bulletin of Chemical Reaction Engineering & Catalysis*, 13(1): 24-36.
- [14] Tavasoli, A., Abbaslou, R.M.M., Dalai, A.K. (2008). Deactivation Behavior of Ruthenium Promoted Co/γAl₂O₃ Catalysts in Fischer-Tropsch Synthesis. *Applied Catalysis A: General*, 346: 58-64.
- [15] Jongsomjit, B., Panranot, J., Goodwin, Jr.J. (2001). Co-Supported Compound Formation in Alumina-Supported Cobalt Catalysts. *Journal of Catalysis*, 204: 98-109.
- [16] Ji, L., Lin, J., Zeng, H.C. (2000). Metal-Support Interactions in Co/Al₂O₃ Catalysts: A Comparative Study on Reactivity of Support. *The Journal of Physical Chemistry B*, 104(8): 1783-1789.
- [17] Rahman, A., Mohammed, M.H., Ahmed, M., Aitani, A.M. (1995). Characterization of Chromia.Alumina Catalysts by X-Ray Photoelectron Spectroscopy, Proton Induced X-Ray Emission and Thermogravimetric Analysis. *Applied Catalysis A: General*, 121: 203-216.
- [18] Sainio, J., Aronniemi, M., Pakarinen, O., Kauraala, K., Airaksinen, S., Krause, O., Lahtinen, J. (2005). An Xps Study of CrOx on A Thin Alumina Film and in Alumina Supported Catalysts. *Applied Surface Science*, 252: 1076-1083.
- [19] Park, W.P., Ledford, J.S. (1997). Characterization and CH₄ Oxidation Activity of Cr/Al₂O₃ Catalysts. *Langmuir*, 13: 2726-2730.
- [20] Kuznetsova, L.L., Paukshtis, E.A., Shkurina, G.P., Shkrabina, R.A., Koryabkina, N.A., Ar-endarskii, D.A., Barannik, G.B., Ismagilov, Z.R. (1997). Chromium Catalysts for Hydrocarbons Destruction. *Catalysis Today*, 17: 209-216.